



Church Street
Rochester | ME3 7LR

Church Street

Higham, Rochester, ME3 7LR

CR Real Estate are delighted to offer this beautifully extended and fully refurbished two-bedroom cottage which offers stylish, modern living in the picturesque village of Higham. The ground floor features an open-plan living space with a brand-new fitted kitchen and a contemporary family bathroom, perfect for everyday comfort and entertaining. Upstairs, you'll find two well-proportioned bedrooms.

To the rear, enjoy a generous, landscaped garden—ideal for relaxing or outdoor dining. Situated in a sought-after village setting, this home is offered with no onward chain, making it an excellent opportunity for first-time buyers or those looking to downsize in style. Please call us now to arrange your appointment to view

- Two Bedroom Cottage
- Refurbished & Extended
- No Onward Chain
- Brand New Kitchen & Bathroom
- Re Wired & New Windows
- Popular Village Location
- Call Now To View

£280,000



Open Plan Living Area

31'11 x 10'1 (9.73m x 3.07m)

Family Bathroom

6'2 x 4'8 (1.88m x 1.42m)

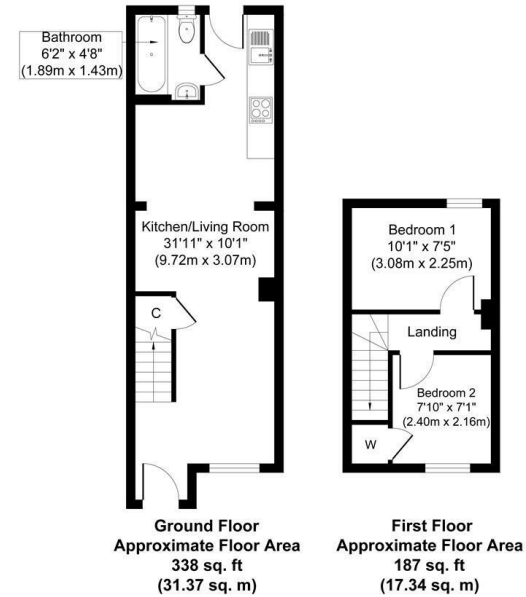
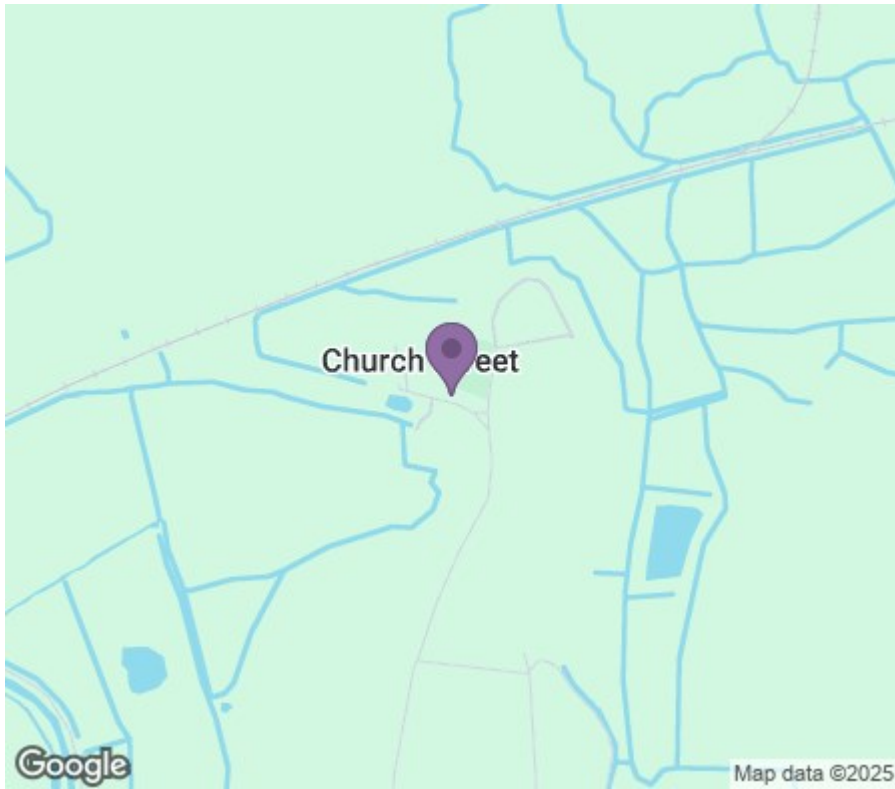
Bedroom

10'1 x 7'5 (3.07m x 2.26m)

Bedroom

7'10 x 7'1 (2.39m x 2.16m)





REAL ESTATE
ESTATE AGENCY : REDEFINED

18 - 20 High Street
Gillingham
Kent
ME7 1BB

01634 570057

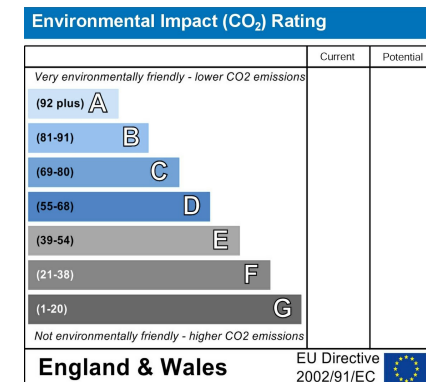
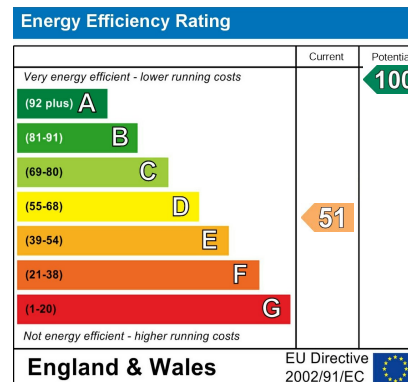
www.crrealestate.co.uk

twitter.com/CRRealEstateUK

facebook.com/CRRealEstateUK



rightmove
find your happy



CR Real Estate endeavour to maintain accurate depictions of properties in Virtual Tours, Floor Plans and descriptions, however, these are intended only as a guide and purchasers must satisfy themselves by personal inspection.