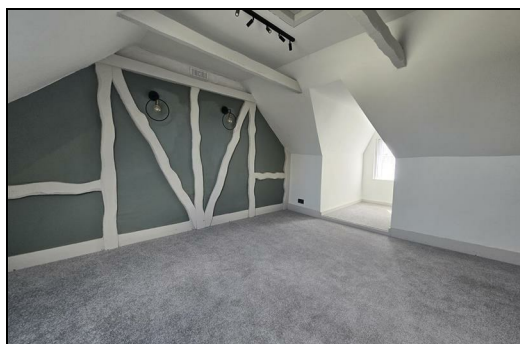






Main Road, Queenborough ME11 5BW

£1,500 Per Calendar Month

This large four-bedroom terraced family home situated over three floors has recently been fully refurbished and offers spacious accommodation throughout. Ground floor consists of a modern fitted kitchen with integrated appliances, downstairs w/c, dining area and an incredible lounge area with a beautiful bay window and feature fireplace. The first floor boasts a modern fitted family bathroom, four generous sized bedrooms with an exceptional master bedroom which has the additional benefit of a modern fitted en-suite shower room and stairs leading up to the second floor which hosts another incredible sized bedroom which completes this marvellous home. Externally you have a low maintenance rear courtyard ideal for outdoor dining and entertaining. Conveniently located close to Queensborough train station with local primary schools, local shops, and amenities right on your doorstep.



Energy Efficiency Rating		
	Current	Potential
Very energy efficient - lower running costs		
(92 plus) A		
(81-91) B		
(69-80) C		
(55-68) D		
(39-54) E		
(21-38) F		
(1-20) G		
Not energy efficient - higher running costs		
England & Wales	EU Directive 2002/91/EC 	

Environmental Impact (CO ₂) Rating		
	Current	Potential
Very environmentally friendly - lower CO2 emissions		
(92 plus) A		
(81-91) B		
(69-80) C		
(55-68) D		
(39-54) E		
(21-38) F		
(1-20) G		
Not environmentally friendly - higher CO2 emissions		
England & Wales	EU Directive 2002/91/EC 	



ESTATE AGENCY : REDEFINED

