



St. Marys Road
Gillingham | ME7 1JJ

St. Marys Road , Gillingham, ME7 1JJ

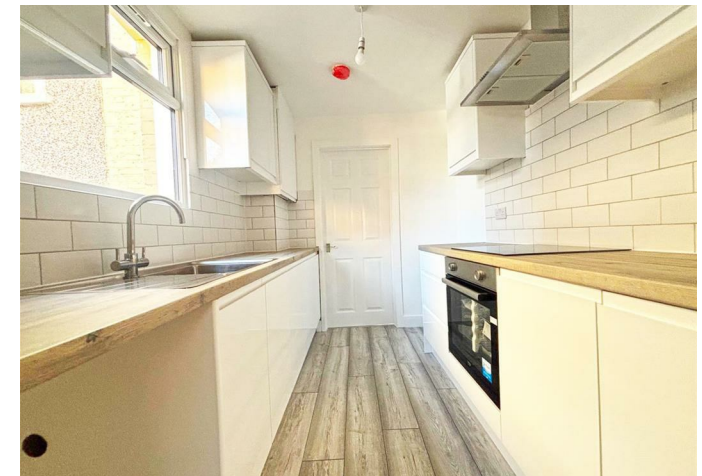
This beautifully refurbished three-bedroom mid-terrace property offers modern living in a highly sought-after location, just a short distance from Gillingham town centre.

The home has been completely updated throughout, providing a fresh and contemporary feel, ideal for family living. The spacious ground floor boasts a bright and airy living area, a brand-new kitchen, and a stylish bathroom, perfect for everyday comfort.

Upstairs, you'll find three separate bedrooms, providing ample space for a growing family or guests.

- Three Bedroom Terrace
- Fully Refurbished Throughout
- Ideal First Time Buy
- No Onward Chain
- Storage Cellar
- Newly Landscaped Garden
- Close To Town Centre
- Call Now To View

£280,000



Living Room

23'6 x 12'6 (7.16m x 3.81m)

Kitchen

9'3 x 6'10 (2.82m x 2.08m)

Bathroom

6'4 x 5'9 (1.93m x 1.75m)

Cellar

Bedroom

12'6 x 10'11 (3.81m x 3.33m)

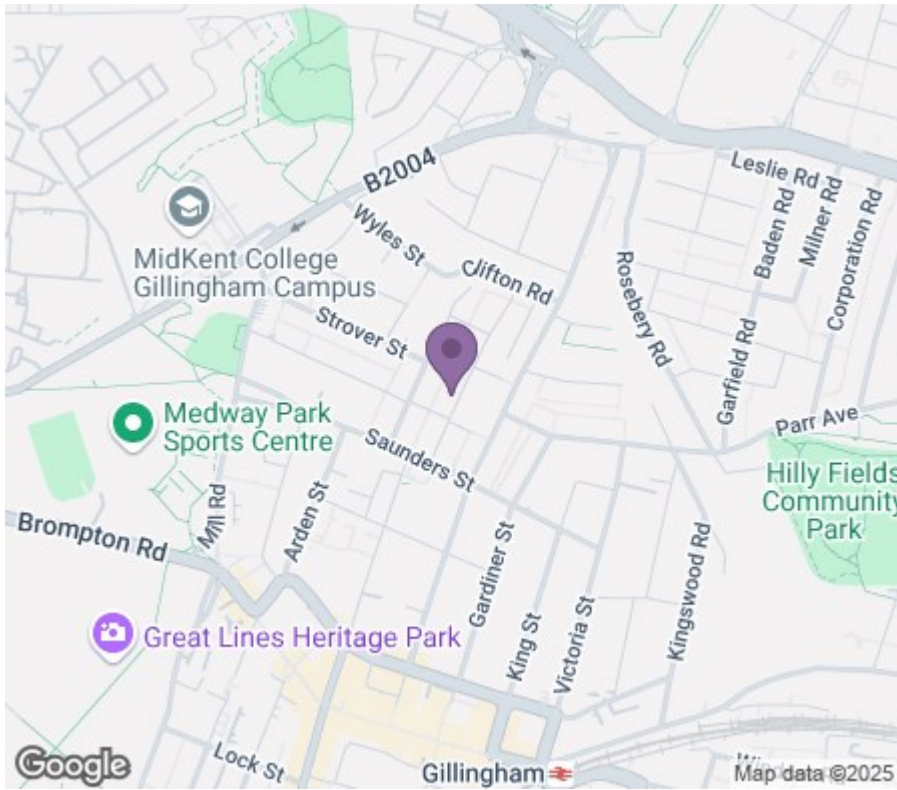
Bedroom

12'0 x 7'10 (3.66m x 2.39m)

Bedroom

9'4 x 7'4 (2.84m x 2.24m)





18 - 20 High Street
 Gillingham
 Kent
 ME7 1BB
01634 570057

www.crr realestate.co.uk
twitter.com/CRRealEstateUK
facebook.com/CRRealEstateUK



Energy Efficiency Rating		Current	Potential
<i>Very energy efficient - lower running costs</i>			
(92 plus) A			
(81-91) B			
(69-80) C			
(55-68) D			
(39-54) E			
(21-38) F			
(1-20) G			
<i>Not energy efficient - higher running costs</i>			
England & Wales	EU Directive 2002/91/EC		

Environmental Impact (CO ₂) Rating		Current	Potential
<i>Very environmentally friendly - lower CO₂ emissions</i>			
(92 plus) A			
(81-91) B			
(69-80) C			
(55-68) D			
(39-54) E			
(21-38) F			
(1-20) G			
<i>Not environmentally friendly - higher CO₂ emissions</i>			
England & Wales	EU Directive 2002/91/EC		

CR Real Estate endeavour to maintain accurate depictions of properties in Virtual Tours, Floor Plans and descriptions, however, these are intended only as a guide and purchasers must satisfy themselves by personal inspection.