



Imperial Road, Gillingham ME7 5PH

£1,500 Per Calendar Month

Nestled on Imperial Road in Gillingham, this charming mid-terrace house has recently undergone a modern refurbishment, making it an ideal home for families or company lets. Boasting three well-proportioned bedrooms, this property offers ample space for comfortable living.

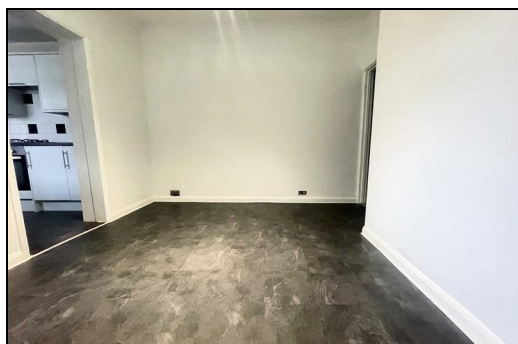
On the ground floor, you will find a spacious lounge, dining room, modern fitted kitchen with integrated appliances and family bathroom. There is also an easy to maintain garden to the rear.


This property is conveniently located near Medway Hospital and therefore perfect for those who work in the healthcare sector or anyone seeking easy access to local amenities. With its blend of modern comforts and traditional charm, this newly refurbished house on Imperial Road is a wonderful opportunity not to be missed.


CR Real Estate are part The Ombudsman Redress Scheme and are a member of the Propertymark Client Money Protection Scheme. Tenant deposits are protected by the Tenancy Deposit Scheme. For more information, please contact us.

Client Money Protection is provided by: Client Money Protect. Scheme Ref: CMP004209

Independent redress is provided by: The Property Ombudsman (TPO). Membership Number: E01687



Energy Efficiency Rating		
	Current	Potential
Very energy efficient - lower running costs		
(92 plus) A		
(81-91) B		
(69-80) C		
(55-68) D		
(39-54) E		
(21-38) F		
(1-20) G		
Not energy efficient - higher running costs		
England & Wales	EU Directive 2002/91/EC	

Environmental Impact (CO ₂) Rating		
	Current	Potential
Very environmentally friendly - lower CO2 emissions		
(92 plus) A		
(81-91) B		
(69-80) C		
(55-68) D		
(39-54) E		
(21-38) F		
(1-20) G		
Not environmentally friendly - higher CO2 emissions		
England & Wales	EU Directive 2002/91/EC	



ESTATE AGENCY : REDEFINED