



Randolph Road
Gillingham | ME7 4PP

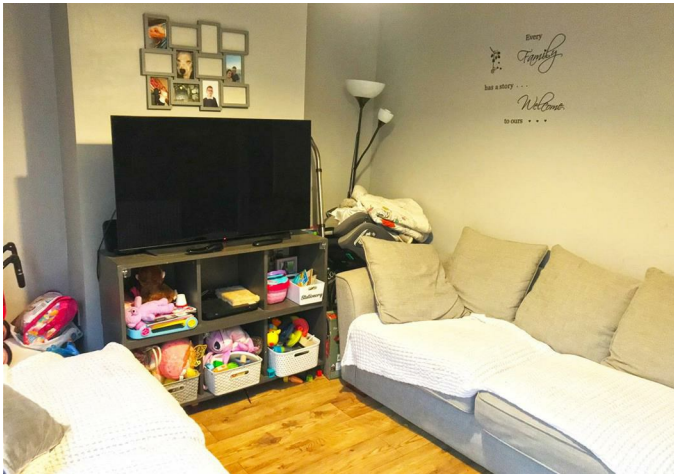


Randolph Road , Gillingham, ME7 4PP

This charming Two Bedroom Victorian Terraced House is ideally located close to Gillingham Town Centre and Mainline Train Station, offering both character and convenience. The ground floor features a welcoming lounge, separate dining room, and a well-sized kitchen, creating a perfect space for both relaxation and entertaining. The property also benefits from a useful cellar, providing additional storage space.

Upstairs, you'll find two spacious double bedrooms, with the modern bathroom conveniently located off one of the bedrooms. To the rear, there is a low-maintenance garden, offering a private outdoor space. The property is offered with no onward chain, making for a smooth and straightforward move. With its blend of period features, practical layout, and excellent location, this home is an ideal choice for those seeking proximity to local amenities and transport links.

£230,000



Lounge

11'7 x 10'1 (3.53m x 3.07m)

Dining Room

11'7 x 9'11 (3.53m x 3.02m)

Kitchen

9'9 x 6'2 (2.97m x 1.88m)

Cellar

11'7 x 10'1 (3.53m x 3.07m)

Bedroom

11'6 x 10'1 (3.51m x 3.07m)

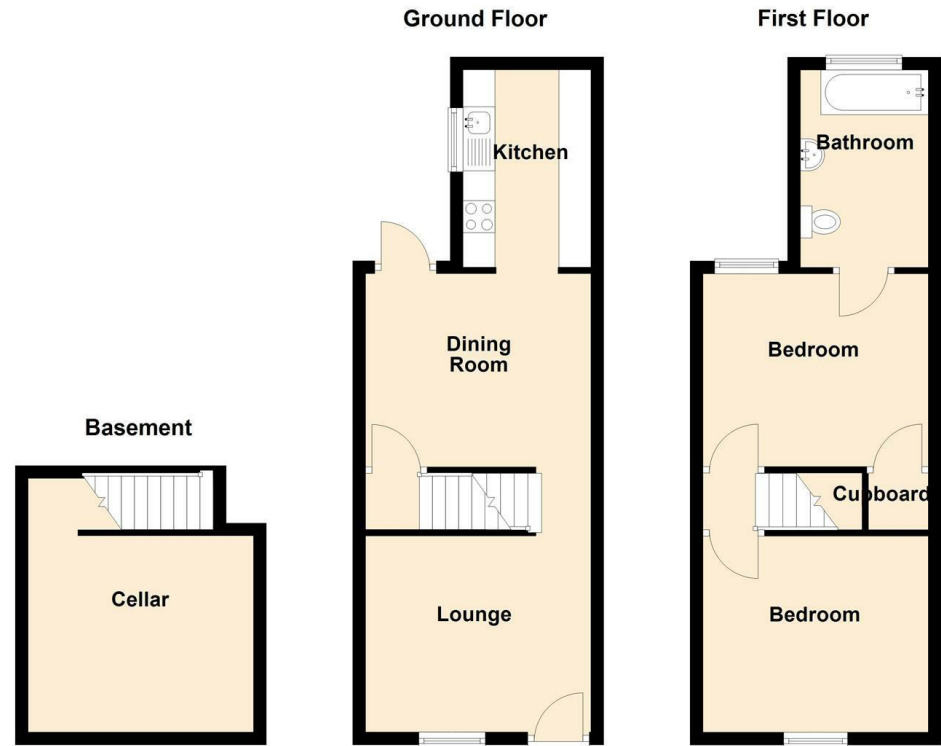
Bedroom

11'6 x 9'11 (3.51m x 3.02m)

Bathroom

10'1 x 6'7 (3.07m x 2.01m)





18 - 20 High Street
 Gillingham
 Kent
 ME7 1BB
01634 570057

www.crr realestate.co.uk
twitter.com/CRRealEstateUK
facebook.com/CRRealEstateUK



Energy Efficiency Rating		Current	Potential
<i>Very energy efficient - lower running costs</i>			
(92 plus) A			
(81-91) B			
(69-80) C			
(55-68) D			
(39-54) E			
(21-38) F			
(1-20) G			
<i>Not energy efficient - higher running costs</i>			
England & Wales	EU Directive 2002/91/EC		

Environmental Impact (CO ₂) Rating		Current	Potential
<i>Very environmentally friendly - lower CO₂ emissions</i>			
(92 plus) A			
(81-91) B			
(69-80) C			
(55-68) D			
(39-54) E			
(21-38) F			
(1-20) G			
<i>Not environmentally friendly - higher CO₂ emissions</i>			
England & Wales	EU Directive 2002/91/EC		

CR Real Estate endeavour to maintain accurate depictions of properties in Virtual Tours, Floor Plans and descriptions, however, these are intended only as a guide and purchasers must satisfy themselves by personal inspection.