

The Terrace

Rochester | ME1 1XN

The Terrace

, Rochester, ME1 1XN

This well-presented split-level apartment is ideally situated close to the historic Rochester High Street, offering easy access to local amenities, shops, and transport links. The property features a welcoming living room and a fully fitted kitchen on the first floor, creating a comfortable and functional space for everyday living.

The second floor is home to a generously sized double bedroom and a modern four-piece bathroom, providing a peaceful retreat with ample space.

With no onward chain, this property presents an excellent opportunity for first-time buyers or investors looking for a well-located home in a desirable area. The apartment also benefits from good views, further enhancing its appeal.

- Split Level Conversion Apartment
- Close To Historic Rochester Town Centre
- Ideal First Time Buy
- No Onward Chain
- Modern 4 Piece Bathroom
- Call To Arrange A Viewing Suite

£210,000



Entrance Hall

Living Room

14'6 x 11'7 (4.42m x 3.53m)

Kitchen

11'10 x 9'4 (3.61m x 2.84m)

Bedroom

14'8 x 14'1 (4.47m x 4.29m)

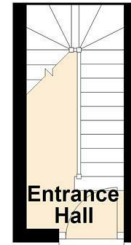
Bathroom

9'6 x 8'0 (2.90m x 2.44m)

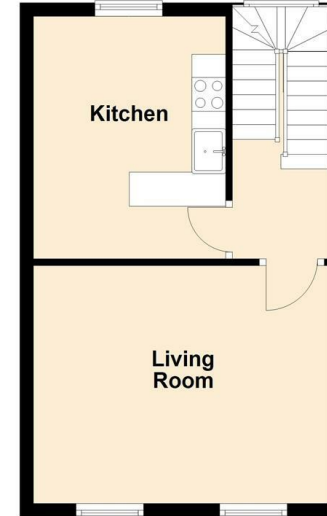




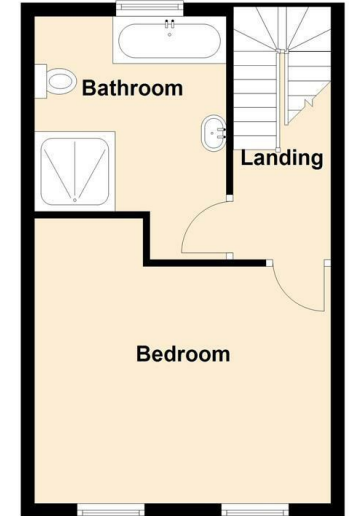
Ground Floor



First Floor



Second Floor



18 - 20 High Street
Gillingham
Kent
ME7 1BB

01634 570057

www.crr realestate.co.uk
twitter.com/CRRealEstateUK
facebook.com/CRRealEstateUK



Energy Efficiency Rating		Current	Potential
Very energy efficient - lower running costs			
(92 plus) A			
(81-91) B			
(69-80) C			
(55-68) D		64	
(39-54) E			
(21-38) F			
(1-20) G			
Not energy efficient - higher running costs			
England & Wales		EU Directive 2002/91/EC	

Environmental Impact (CO ₂) Rating		Current	Potential
Very environmentally friendly - lower CO ₂ emissions			
(92 plus) A			
(81-91) B			
(69-80) C			
(55-68) D			
(39-54) E			
(21-38) F			
(1-20) G			
Not environmentally friendly - higher CO ₂ emissions			
England & Wales		EU Directive 2002/91/EC	

CR Real Estate endeavour to maintain accurate depictions of properties in Virtual Tours, Floor Plans and descriptions, however, these are intended only as a guide and purchasers must satisfy themselves by personal inspection.