



Foxgrove

Sittingbourne | ME10 2DW



REAL ESTATE

ESTATE AGENCY · REDEFINED

Foxgrove

Milton Regis, Sittingbourne, ME10

🏠

CR Real Estate are delighted to offer for sale with NO ONWARD CHAIN this three bedroom detached family home situated on a modern estate in Milton Regis, Sittingbourne. The property does need some updating. Benefits include a spacious, open plan living area, fitted kitchen and cloakroom/WC to the ground floor. The first floor has the three bedrooms and separate family bathroom. Externally there is an enclosed garden to the rear with off street parking and a garage to the front. Please call us now to arrange your appointment to view.

- Detached Family Home • Three Bedrooms
- Parking & Garage • Some Updating Required
- Spacious Lounge/Diner • Cloakroom/WC
- Rear Garden • Call Now To View

£280,000



Entrance Hall

Lounge/Diner

Kitchen

Cloakroom/WC

Garage

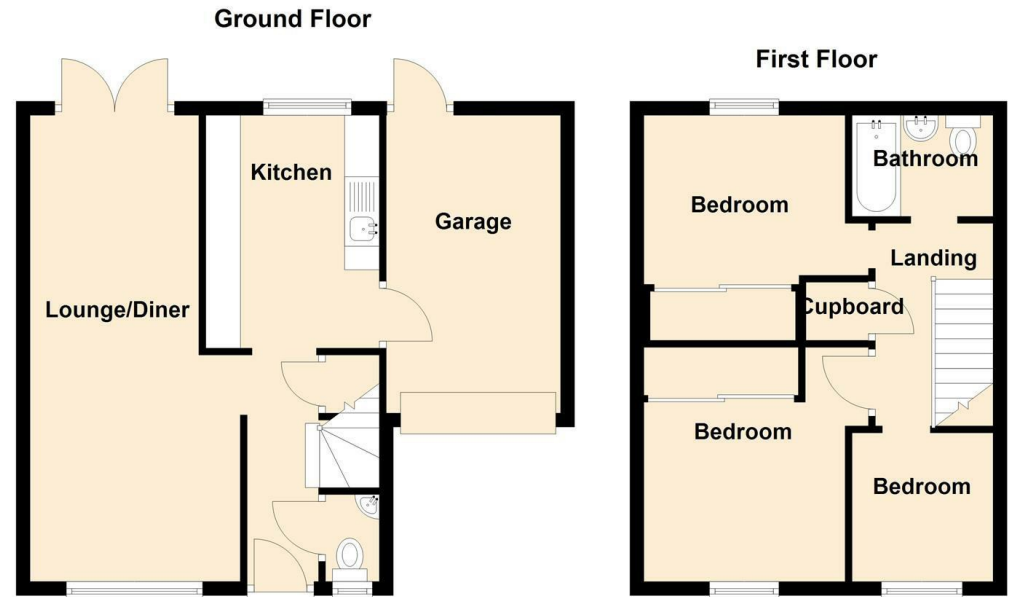
Bedroom

Bedroom

Bedroom

Family Bathroom





18 - 20 High Street
 Gillingham
 Kent
 ME7 1BB
01634 570057

www.crr realestate.co.uk
twitter.com/CRRealEstateUK
facebook.com/CRRealEstateUK



Energy Efficiency Rating		Current	Potential
<i>Very energy efficient - lower running costs</i>			
(92 plus) A			
(81-91) B			
(69-80) C			
(55-68) D			
(39-54) E			
(21-38) F			
(1-20) G			
<i>Not energy efficient - higher running costs</i>			
England & Wales		EU Directive 2002/91/EC	

Environmental Impact (CO ₂) Rating		Current	Potential
<i>Very environmentally friendly - lower CO₂ emissions</i>			
(92 plus) A			
(81-91) B			
(69-80) C			
(55-68) D			
(39-54) E			
(21-38) F			
(1-20) G			
<i>Not environmentally friendly - higher CO₂ emissions</i>			
England & Wales		EU Directive 2002/91/EC	

CR Real Estate endeavour to maintain accurate depictions of properties in Virtual Tours, Floor Plans and descriptions, however, these are intended only as a guide and purchasers must satisfy themselves by personal inspection.