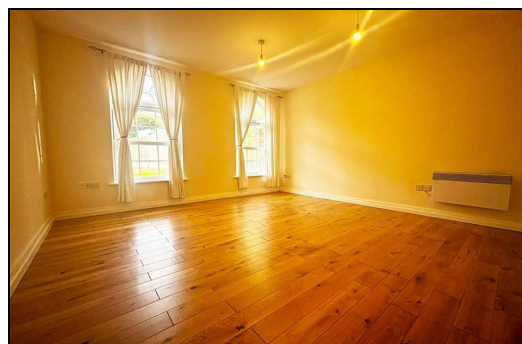




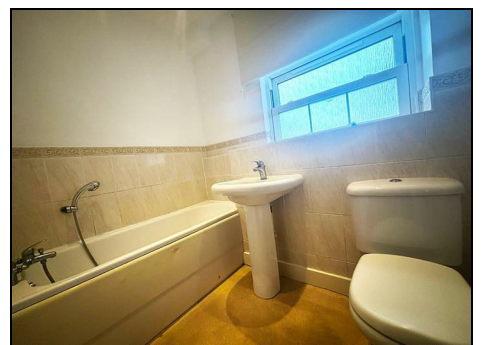
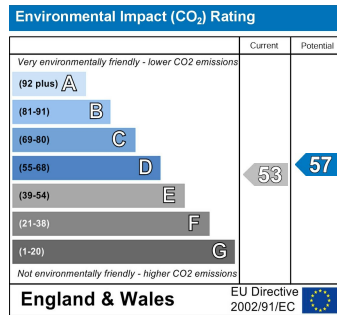
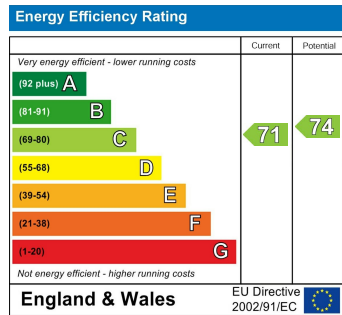
Marigold Way, Maidstone ME16 0GA

Offers Over £220,000

CR Real Estate are delighted to offer for sale with NO ONWARD CHAIN this modern two bedroom GROUND FLOOR APARTMENT situated close to Maidstone Hospital. Internal benefits include lounge, modern fitted kitchen, family bathroom and two double bedrooms with en suite to the master. Externally the property has allocated parking as well as visitors parking. Please call us now to arrange your appointment to view.



Living Area	14'3 x 13'8 (4.34m x 4.17m)
Kitchen	10'8 x 10'2 (3.25m x 3.10m)
Bedroom One	13'8 x 9'5 (4.17m x 2.87m)
Ensuite	5'10 x 5'0 (1.78m x 1.52m)
Bedroom Two	13'8 x 8'1 (4.17m x 2.46m)
Bathroom	7'5 x 6'5 (2.26m x 1.96m)



ESTATE AGENCY : REDEFINED

