



Offers Over £850,000

Riverside

Eynsford | DA4 0AE

Exceptional 4-Bedroom Semi-Detached Brand New Homes in the Heart of Eynsford.

Nestled in a commanding elevated position in the charming village of Eynsford, Stone Bridge and Silver Wold are 2 Exceptional Four-Bedroom Semi-Detached Homes, each with its own unique design. These homes offer individual external and internal layouts, ensuring a distinct and bespoke living experience.

Built to a high specification, these homes are crafted with leading insulation materials that enhance energy efficiency, keeping heating costs down in winter and ensuring a cool atmosphere during summer months. Both homes boast impressive views and an elevated setting, making the most of their picturesque surroundings.

The properties are located in a conservation area, close to the iconic ford, bridge, and meandering river that define the beauty of Eynsford. The village offers an idyllic setting, with convenient local amenities including a shop, post office, and traditional pubs. Nearby villages such as Farningham and Shoreham also provide further amenities, while Sevenoaks is only 7 miles away. For those commuting to central London, the M20/M25 are within easy reach, just 3 miles away, and mainline stations at Eynsford, Sevenoaks, and Swanley offer regular services to London.

Eynsford is renowned for its scenic beauty and historic charm, and with a wide range of schooling options in both the private and state sectors—including Kent's grammar schools—this location offers a perfect blend of village living and



Entrance Hall

Lounge

18'5 x 13'0 (5.61m x 3.96m)

Kitchen/Diner

32'7 x 12'6 (9.93m x 3.81m)

Utility Room

11'0 x 6'7 (3.35m x 2.01m)

Cloakroom/WC

Bedroom

13'0 x 12'8 (3.96m x 3.86m)

En Suite

10;10 x 6'7 (3.05m;3.05m x 2.01m)

Bedroom

12'8 x 9'6 (3.86m x 2.90m)

Bedroom

10'10 x 10'1 (3.30m x 3.07m)

Bedroom

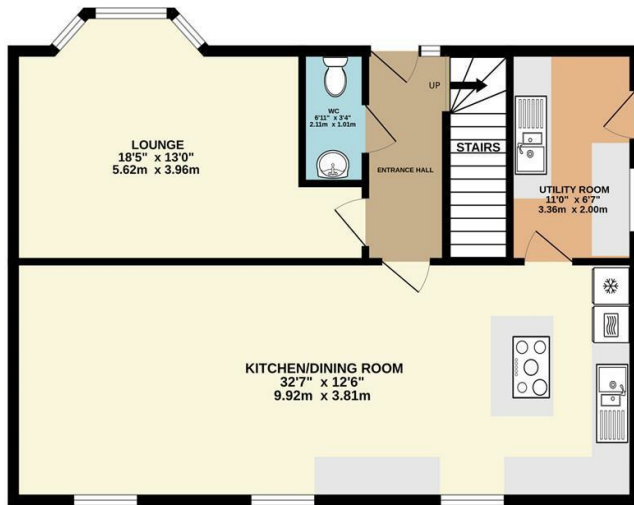
9'3 x 8'11 (2.82m x 2.72m)

Bathroom

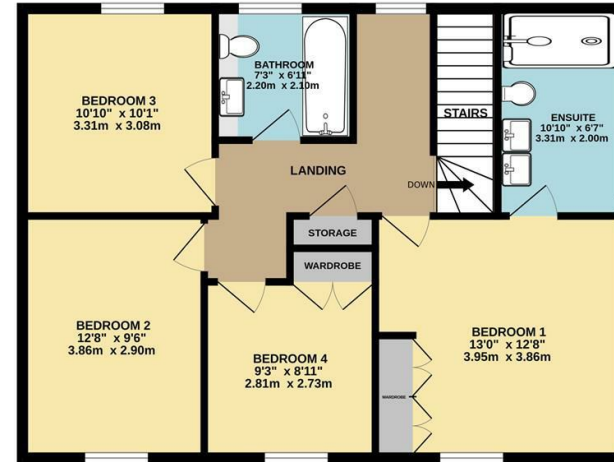
7'3 x 6'11 (2.21m x 2.11m)



GROUND FLOOR
778 sq.ft. (72.3 sq.m.) approx.



1ST FLOOR
739 sq.ft. (68.7 sq.m.) approx.



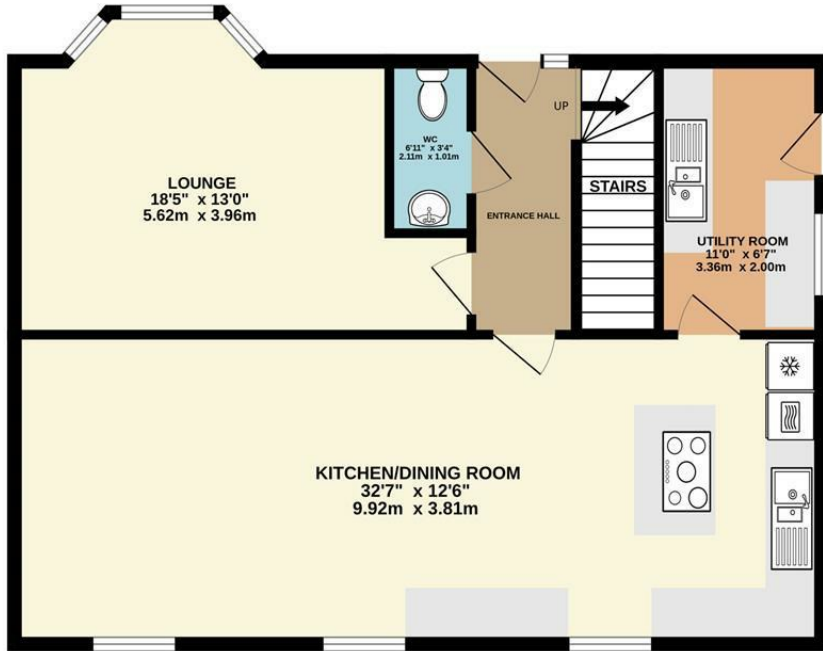
TOTAL FLOOR AREA: 1517 sq.ft. (140.9 sq.m.) approx.

Whilst every attempt has been made to ensure the accuracy of the floorplan contained here, measurements of doors, windows, rooms and any other items are approximate and no responsibility is taken for any error, omission or mis-statement. This plan is for illustrative purposes only and should be used as such by any prospective purchaser. The services, systems and appliances shown have not been tested and no guarantee as to their operability or efficiency can be given.
Made with Metropix ©2024

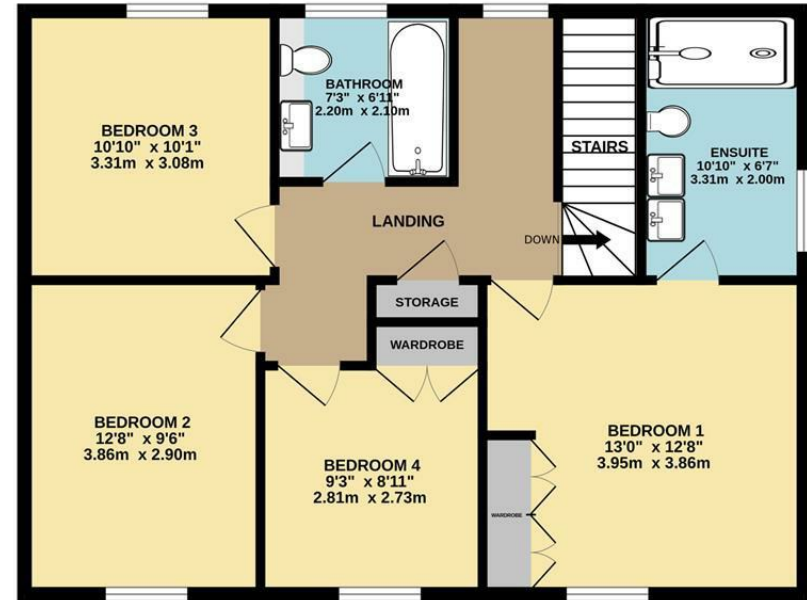




GROUND FLOOR
778 sq.ft. (72.3 sq.m.) approx.



1ST FLOOR
739 sq.ft. (68.7 sq.m.) approx.



TOTAL FLOOR AREA : 1517 sq.ft. (140.9 sq.m.) approx.

Whilst every attempt has been made to ensure the accuracy of the floorplan contained here, measurements of doors, windows, rooms and any other items are approximate and no responsibility is taken for any error, omission or mis-statement. This plan is for illustrative purposes only and should be used as such by any prospective purchaser. The services, systems and appliances shown have not been tested and no guarantee as to their operability or efficiency can be given.

Made with Metropix ©2024





18 - 20 High Street
 Gillingham
 Kent
 ME7 1BB
01634 570057

www.crralestate.co.uk
twitter.com/CRRealEstateUK
facebook.com/CRRealEstateUK



Energy Efficiency Rating		Current	Potential
<i>Very energy efficient - lower running costs</i>			
(92 plus) A			
(81-91) B			
(69-80) C			
(55-68) D			
(39-54) E			
(21-38) F			
(1-20) G			
<i>Not energy efficient - higher running costs</i>			
England & Wales		EU Directive 2002/91/EC	
		79	86

Environmental Impact (CO ₂) Rating		Current	Potential
<i>Very environmentally friendly - lower CO₂ emissions</i>			
(92 plus) A			
(81-91) B			
(69-80) C			
(55-68) D			
(39-54) E			
(21-38) F			
(1-20) G			
<i>Not environmentally friendly - higher CO₂ emissions</i>			
England & Wales		EU Directive 2002/91/EC	



CR Real Estate endeavour to maintain accurate depictions of properties in Virtual Tours, Floor Plans and descriptions, however, these are intended only as a guide and purchasers must satisfy themselves by personal inspection.