



Canterbury Street, Gillingham ME7 5UB

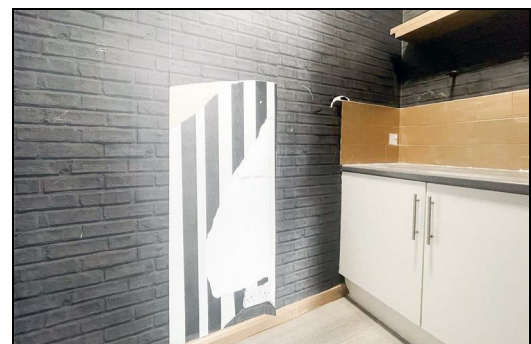
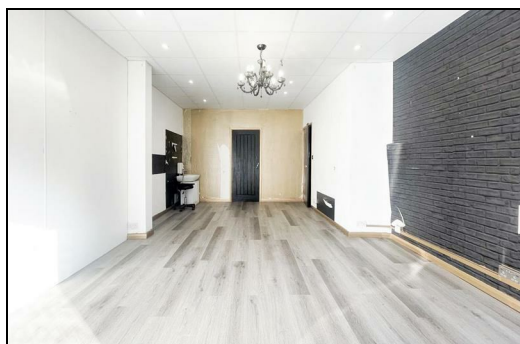
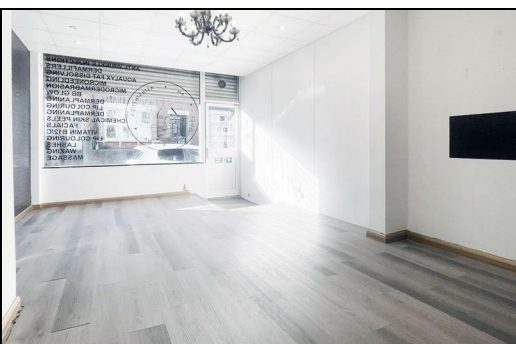
£795 Per Calendar Month

Salon to rent in Canterbury Street, Gillingham.

Located on a busy road with lots of passing traffic, this shop is perfectly situated for attracting customers. The shutter to the shop front provides security, giving you peace of mind for your business.

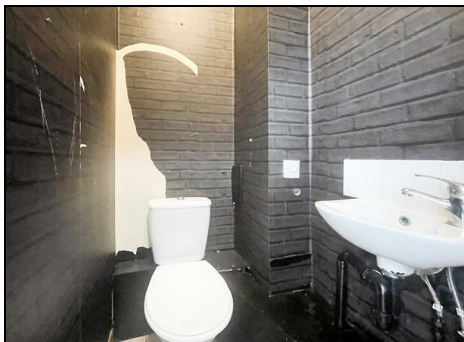
Previously run as a successful hairdressers and aesthetics salon, this property is ideal for those looking to continue in the beauty industry or start a new venture. The salon consists of 1 reception room, large basement, toilet and small kitchenette area offering convenience and flexibility for various business setups.

Please call us to arrange your viewing.



Energy Efficiency Rating		Current	Potential
Very energy efficient - lower running costs			
(92 plus) A			
(81-91) B			
(69-80) C			
(55-68) D			
(39-54) E			
(21-38) F			
(1-20) G			
Not energy efficient - higher running costs			
England & Wales		EU Directive 2002/91/EC	

Environmental Impact (CO ₂) Rating		Current	Potential
Very environmentally friendly - lower CO ₂ emissions			
(92 plus) A			
(81-91) B			
(69-80) C			
(55-68) D			
(39-54) E			
(21-38) F			
(1-20) G			
Not environmentally friendly - higher CO ₂ emissions			
England & Wales		EU Directive 2002/91/EC	



ESTATE AGENCY : REDEFINED

