



Jasmine Court

Maidstone | ME16 8BZ



REAL ESTATE

ESTATE AGENCY · REDEFINED

Jasmine Court , Maidstone, ME16 8BZ

This charming two-bedroom, ground-floor apartment in Jasmine Court is perfectly situated in the popular area of Maidstone and is ideal for first-time buyers. The property features a spacious living area, alongside a separate fitted kitchen designed with integrated appliances. Both bedrooms are generously sized doubles, perfect for couples or small families and the modern family bathroom adds further appeal to this delightful home.

Outside, you will benefit from a landscaped and private garden to the rear along with allocated parking, and ample communal gardens to enjoy. Don't miss the opportunity to view this wonderful home - call us today to arrange your appointment and explore all that Jasmine Court has to offer!

£240,000



Entrance Hall

Living Room

18'3 x 11'5 (5.56m x 3.48m)

Bedroom

11'5 x 10'11 (3.48m x 3.33m)

Bedroom

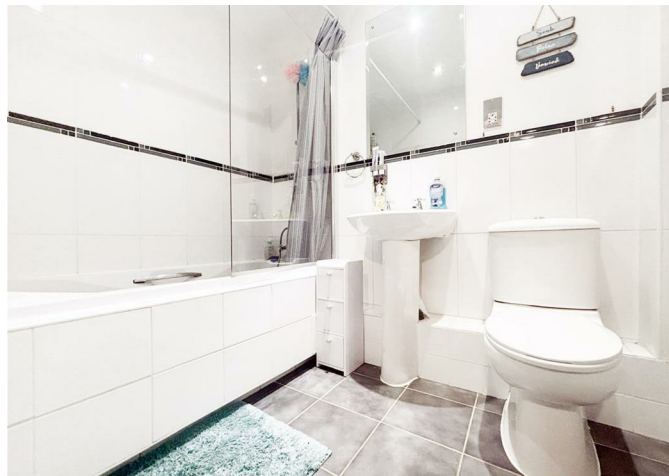
10'11 x 8'7 (3.33m x 2.62m)

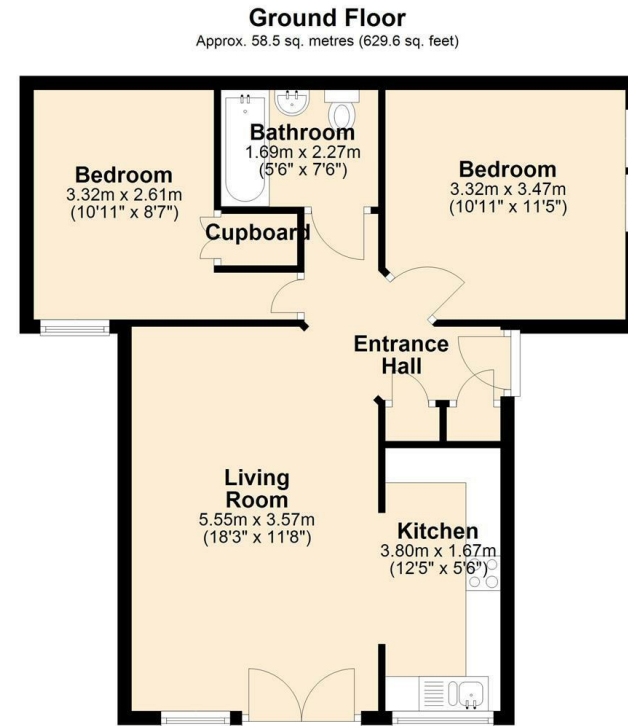
Bathroom

7'6 x 5'6 (2.29m x 1.68m)

Kitchen

12'5 x 5'6 (3.78m x 1.68m)





Total area: approx. 58.5 sq. metres (629.6 sq. feet)



18 - 20 High Street
Gillingham
Kent
ME7 1BB
01634 570057

www.crr realestate.co.uk
twitter.com/CRRealEstateUK
facebook.com/CRRealEstateUK



Energy Efficiency Rating		Current	Potential
Very energy efficient - lower running costs			
(92 plus) A			
(81-91) B		79	79
(69-80) C			
(55-68) D			
(39-54) E			
(21-38) F			
(1-20) G			
Not energy efficient - higher running costs			
England & Wales		EU Directive 2002/91/EC	

Environmental Impact (CO ₂) Rating		Current	Potential
Very environmentally friendly - lower CO ₂ emissions			
(92 plus) A			
(81-91) B			
(69-80) C			
(55-68) D			
(39-54) E			
(21-38) F			
(1-20) G			
Not environmentally friendly - higher CO ₂ emissions			
England & Wales		EU Directive 2002/91/EC	

CR Real Estate endeavour to maintain accurate depictions of properties in Virtual Tours, Floor Plans and descriptions, however, these are intended only as a guide and purchasers must satisfy themselves by personal inspection.