



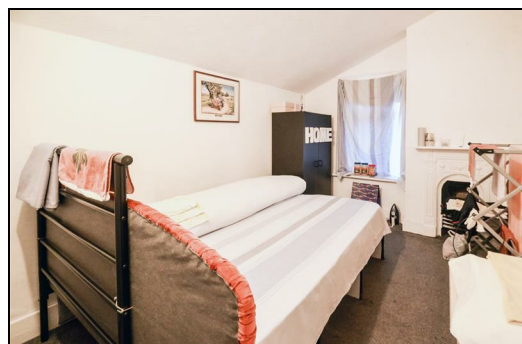
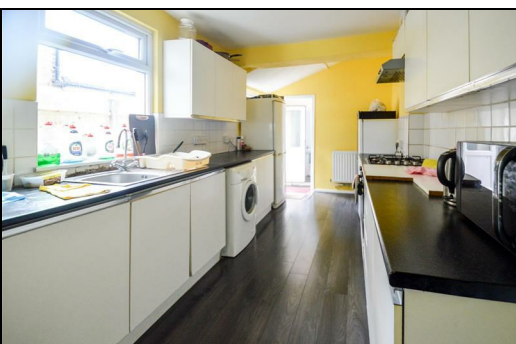
Rock Avenue, Gillingham ME7 5PT

Offers Over £300,000

CR Real Estate are delighted to present to the market this three-bedroom terraced property conveniently located in the popular town of Gillingham. Set over three floors, this home is perfect for any first-time buyer or growing family, and benefits from a spacious and versatile layout. Alternatively this property would also make an ideal investment opportunity for any landlord.

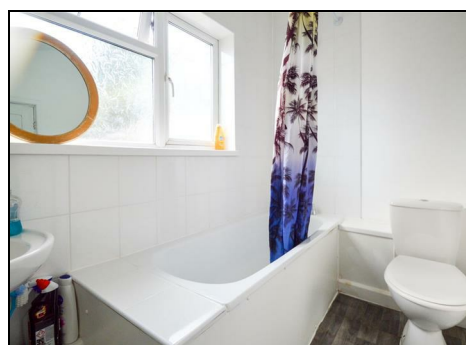
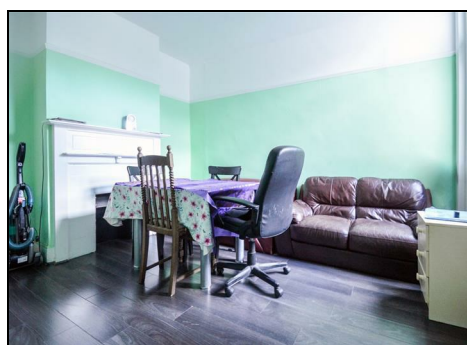
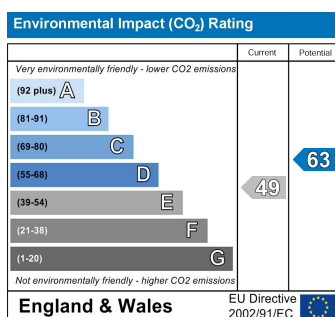
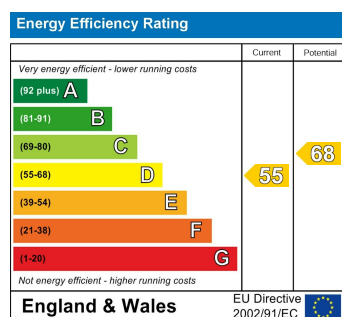
As you enter the home, you are greeted with an entrance hall, lounge with bay front window, separate dining room with access to the cellar space which is currently utilised as a fourth bedroom, large kitchen, and family bathroom with separate cloakroom. The first floor offers a landing space and three well sized bedrooms. Externally, this home offers an enclosed rear garden with grass lawn.

Rock Avenue is well located with a variety of local amenities, shops, parks, transport options, and schools close by including; Byron Primary School, Barnsole Primary School, Napier Community Primary & Nursery Academy, Brompton Academy, Chatham Grammar, and The Robert Napier School. Additionally, this property is only 6 minutes' walk away from Medway Maritime Hospital; and for commuters Gillingham train station is within 12 minutes' walk away and offers fantastic railway links to the surrounding areas and London.



CENTURY RESIDENTIAL are pleased to offer this REFURBISHED three bedroom home to rent in Gillingham. The property is close to the local high street, train station and main road links. Internally the property offers two reception rooms, brand new kitchen, brand new bathroom, and separate toilet. Upstairs offers three great sized bedrooms. The property has been refurbished throughout. The main benefits include gas central heating, permit parking and garden to rear. The property is READY NOW so please call to arrange your viewing.

Lounge	10'6 x 11'1 (3.20m x 3.38m)
Dining Room	11'10 x 10'6 (3.61m x 3.20m)
Kitchen	16'6 x 7'11 (5.03m x 2.41m)
Bathroom	8'0 x 5'2 (2.44m x 1.57m)
WC	3'6 x 3'4 (1.07m x 1.02m)
Bedroom	13'2 x 11'1 (4.01m x 3.38m)
Bedroom	11'10 x 8'4 (3.61m x 2.54m)
Bedroom	10'8 x 8'0 (3.25m x 2.44m)
Cellar	13'0 x 10'10 (3.96m x 3.30m)



ESTATE AGENCY : REDEFINED

