



Windmill Road, Gillingham ME7 5NX

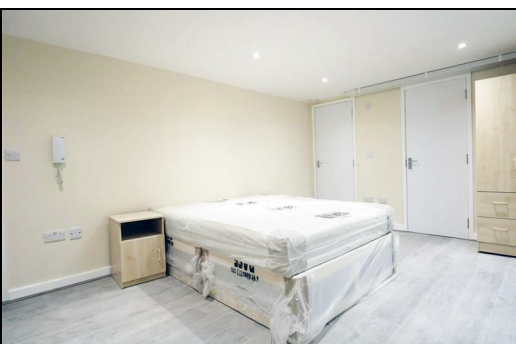
£900 Per Calendar Month


CR Real Estate are delighted to offer this modern 1 Bedroom flat to rent within a block of five. Internally the property benefits from a spacious kitchen dining area with new dining room furniture, the kitchen also has fitted appliances (washing machine, Oven, Hob and fridge/Freezer). There is also a separate bedroom with a double bed and mattress. There is a modern shower room. The property is situated a stone throw from Medway Hospital as well as a short walk to Gillingham Town Centre and Train Station. Please call us now to arrange your viewing!


CR Real Estate are part The Ombudsman Redress Scheme and are a member of the Propertymark Client Money Protection Scheme. Tenant deposits are protected by the Tenancy Deposit Scheme. For more information, please contact us.

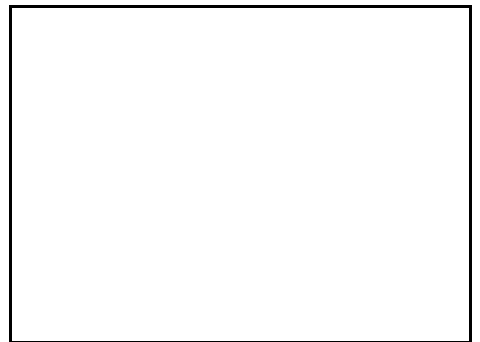
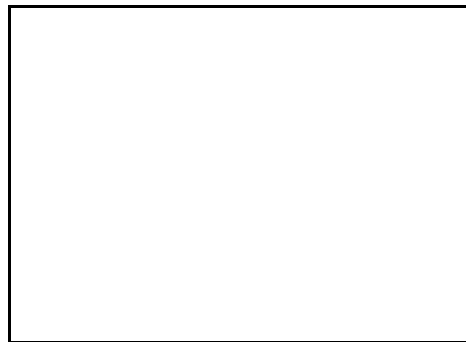
Client Money Protection is provided by: Client Money Protect. Scheme Ref: CMP004209

Independent redress is provided by: The Property Ombudsman (TPO). Membership Number: E01687



Energy Efficiency Rating		
	Current	Potential
Very energy efficient - lower running costs		
(92 plus) A		
(81-91) B		
(69-80) C		
(55-68) D		
(39-54) E		
(21-38) F		
(1-20) G		
Not energy efficient - higher running costs		
England & Wales	EU Directive 2002/91/EC	

Environmental Impact (CO ₂) Rating		
	Current	Potential
Very environmentally friendly - lower CO ₂ emissions		
(92 plus) A		
(81-91) B		
(69-80) C		
(55-68) D		
(39-54) E		
(21-38) F		
(1-20) G		
Not environmentally friendly - higher CO ₂ emissions		
England & Wales	EU Directive 2002/91/EC	



ESTATE AGENCY : REDEFINED

