



Marshall Road, Gillingham ME8 0AL

£1,100,000

Welcome to Marshall Road! This newly built six-bedroom detached family home is situated in a highly sought-after residential area in Rainham. This remarkable home combines modern design with practical features and an expansive layout, making it an ideal choice any large family.

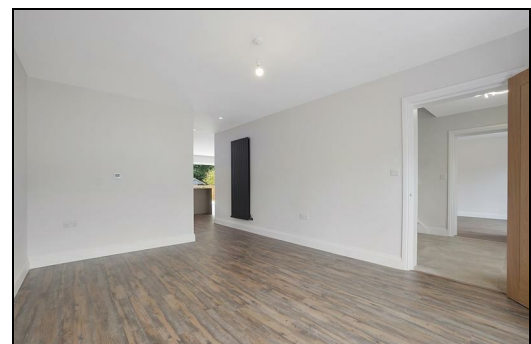
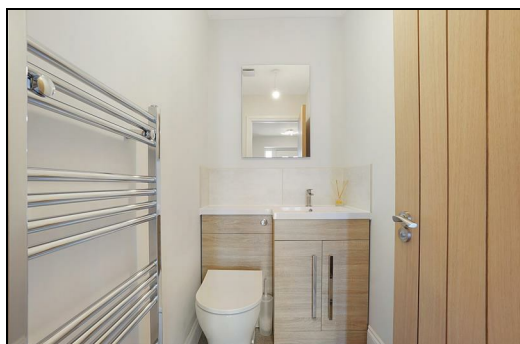
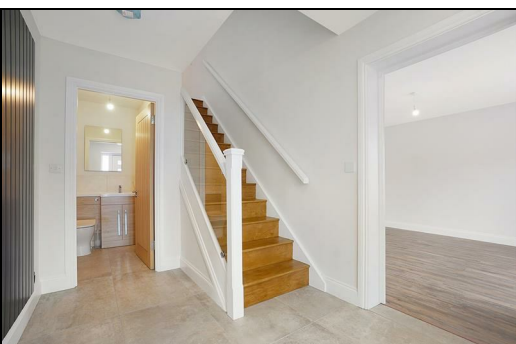
The ground floor features a large lounge, a separate dining area, and a modern kitchen family room at the rear, complete with bi-folding doors that open out onto the rear garden, creating a seamless indoor-outdoor living experience.

The first floor of this impressive home boasts four double bedrooms, two of which have en-suite shower rooms, alongside a separate family bathroom. The second floor adds even more living space with two additional double bedrooms, each measuring a generous 30 feet, and another sleek shower room.

Externally, the property benefits from off-street parking for several vehicles, a bin store, and a car charging port at the front. The rear garden is a great size and features summerhouses that house solar panels, enhancing the property's eco-friendliness and providing a perfect outdoor retreat.

Situated in Rainham, you will benefit from an array of local amenities close by, including popular local schools such as Rainham Mark Grammar School, Thames View Primary School, and Rainham School for Girls. As well as excellent transport links by train, car, and bus for easy access to surrounding local towns, as well as the A2/M2 for quick connections to London and the Kent coast.

Don't miss the chance to view this incredible home and discover all its potential. Contact us today to book your viewing.



Entrance Hall

Lounge 19'5 x 12'1 (5.92m x 3.68m)

Dining Room 21'8 x 11'5 (6.60m x 3.48m)

Kitchen/Family Room 30'5 x 16'6 (9.27m x 5.03m)

Utility Room 6'9 x 6'0 (2.06m x 1.83m)

Cloakroom/WC

Bedroom 15'11 x 12'2 (4.85m x 3.71m)

En Suite

Bedroom 14'10 x 11'6 (4.52m x 3.51m)

En Suite

Bedroom 15'0 x 11'6 (4.57m x 3.51m)

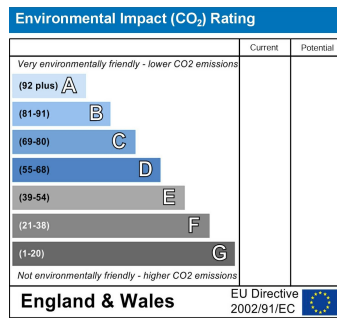
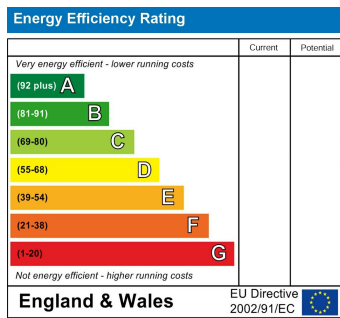
Bedroom 14'1 x 12'2 (4.29m x 3.71m)

Family Bathroom 10'3 x 7'7 (3.12m x 2.31m)

Bedroom 30'0 x 11'9 (9.14m x 3.58m)

Bedroom 30'0 x 12'5 (9.14m x 3.78m)

Shower Room 7'8 x 7'0 (2.34m x 2.13m)



ESTATE AGENCY : REDEFINED

