



**Milton Road, Gillingham ME7 5LP**

**£1,300 Per Calendar Month**

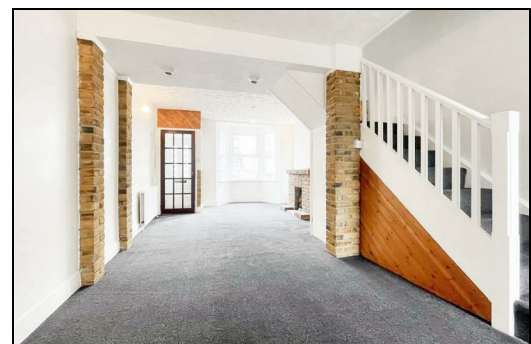
CR Real Estate are delighted to present this charming two bedroom family located on Milton Road in the heart of Gillingham.

This delightful mid-terrace house has been recently refurbished throughout with a modern feel. Internally the property boasts a large lounge/diner with a new fitted kitchen, downstairs W.C and utility room. There is also an easy to maintain garden to the rear. Upstairs you will find two bedrooms and a family bathroom. Situated in a convenient location, you'll find yourself within easy reach of local amenities, schools, and transport links. This property is available now so please call us to arrange your viewing!

CR Real Estate are part The Ombudsman Redress Scheme and are a member of the Propertymark Client Money Protection Scheme. Tenant deposits are protected by the Tenancy Deposit Scheme. For more information, please contact us.

Client Money Protection is provided by: Client Money Protect. Scheme Ref: CMP004209

Independent redress is provided by: The Property Ombudsman (TPO). Membership Number: E01687



Energy Efficiency Rating		
	Current	Potential
<i>Very energy efficient - lower running costs</i>		
(92 plus) <b>A</b>		
(81-91) <b>B</b>		
(69-80) <b>C</b>		
(55-68) <b>D</b>		
(39-54) <b>E</b>		
(21-38) <b>F</b>		
(1-20) <b>G</b>		
<i>Not energy efficient - higher running costs</i>		
<b>England &amp; Wales</b>	EU Directive 2002/91/EC	

Environmental Impact (CO <sub>2</sub> ) Rating		
	Current	Potential
<i>Very environmentally friendly - lower CO2 emissions</i>		
(92 plus) <b>A</b>		
(81-91) <b>B</b>		
(69-80) <b>C</b>		
(55-68) <b>D</b>		
(39-54) <b>E</b>		
(21-38) <b>F</b>		
(1-20) <b>G</b>		
<i>Not environmentally friendly - higher CO2 emissions</i>		
<b>England &amp; Wales</b>	EU Directive 2002/91/EC	



**ESTATE AGENCY : REDEFINED**

