



Marlborough Road

Gillingham | ME7 5HH



Marlborough Road
, Gillingham, ME7 5HH

Offers In Excess Of £99,999

INVESTMENT OPPORTUNITY FOR CASH BUYERS ONLY! CR REAL ESTATE ARE PLEASED TO PRESENT THIS ONE BEDROOM TOP FLOOR FLAT FOR SALE WITH NO ONWARD CHAIN, SITUATED NEAR GILLINGHAM TOWN CENTRE AND AN EASY WALK TO GILLINGHAM MAINLINE TRAIN STATION. THE PROPERTY NEEDS FULL REFURBISHMENT, AND BENEFITS FROM A SPACIOUS LIVING AREA, ALLOCATED PARKING SPACE, AND A LONG LEASE. CALL NOW TO ARRANGE YOUR APPOINTMENT FOR VIEWING ALL THE POTENTIAL THIS PROPERTY HAS TO OFFER.

- Investment Opportunity
- Cash Buyers Only
- No Onward Chain
- Allocated Parking
- Updating Required
- Spacious Living Space
- Views of Great Lines Park
- Call Now to View



Entrance Hall

Living Room/Kitchen

24'2 x 11'2 (7.37m x 3.40m)

Bedroom

12'1 x 11'1 (3.68m x 3.38m)

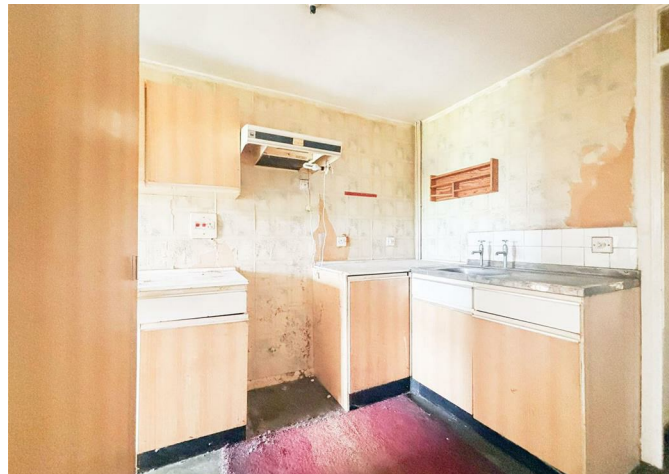
Bathroom

7'8 x 4'11 (2.34m x 1.50m)

Top Floor
Approx. 44.1 sq. metres (474.8 sq. feet)



Total area: approx. 44.1 sq. metres (474.8 sq. feet)





REAL ESTATE
ESTATE AGENCY · REDEFINED

18 - 20 High Street
Gillingham
Kent
ME7 1BB

01634 570057

www.crr realestate.co.uk
twitter.com/CRRealEstateUK
facebook.com/CRRealEstateUK



rightmove
find your happy



ClientMoney
Protect



Energy Efficiency Rating		
	Current	Potential
<i>Very energy efficient - lower running costs</i>		
(92 plus) A		
(81-91) B		
(69-80) C		
(55-68) D		
(39-54) E		
(21-38) F		
(1-20) G		
<i>Not energy efficient - higher running costs</i>		
England & Wales	EU Directive 2002/91/EC	

Environmental Impact (CO ₂) Rating		
	Current	Potential
<i>Very environmentally friendly - lower CO2 emissions</i>		
(92 plus) A		
(81-91) B		
(69-80) C		
(55-68) D		
(39-54) E		
(21-38) F		
(1-20) G		
<i>Not environmentally friendly - higher CO2 emissions</i>		
England & Wales	EU Directive 2002/91/EC	



CR Real Estate endeavour to maintain accurate depictions of properties in Virtual Tours, Floor Plans and descriptions, however, these are intended only as a guide and purchasers must satisfy themselves by personal inspection.