



**Wickham Close, Sittingbourne ME9 7NT**

**£1,950 Per Calendar Month**

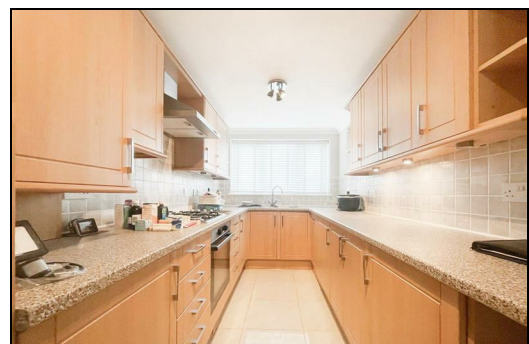
CR Real Estate are delighted to present this beautiful 4 bedroom detached house in Wickham Close, Newington. Internally the property boasts a modern fitted kitchen with integrated appliances including Fridge freezer, dishwasher, washing machine and a cooker! A spacious lounge/diner with patio doors leading to the generous size garden. There is a downstairs WC and the added bonus of a garage!


Upstairs you will find four great size bedrooms, the master benefits from an en-suite bathroom. There is also a family bathroom. This property also has an large driveway to front with plenty of space for two cars. Wickham Close is Located in a quiet cul-de-sac and offers a safe environment for families and with excellent transport links nearby, you'll also have easy access to schools, shops, and other amenities. This property is not one to be missed so please call us to arrange your viewing!


CR Real Estate are part The Ombudsman Redress Scheme and are a member of the Propertymark Client Money Protection Scheme. Tenant deposits are protected by the Tenancy Deposit Scheme. For more information, please contact us.

Client Money Protection is provided by: Client Money Protect. Scheme Ref: CMP004209

Independent redress is provided by: The Property Ombudsman (TPO). Membership Number: E01687



Energy Efficiency Rating		
	Current	Potential
Very energy efficient - lower running costs		
(92 plus) <b>A</b>		
(81-91) <b>B</b>		
(69-80) <b>C</b>		
(55-68) <b>D</b>		
(39-54) <b>E</b>		
(21-38) <b>F</b>		
(1-20) <b>G</b>		
Not energy efficient - higher running costs		
<b>England &amp; Wales</b>	EU Directive 2002/91/EC	

Environmental Impact (CO <sub>2</sub> ) Rating		
	Current	Potential
Very environmentally friendly - lower CO2 emissions		
(92 plus) <b>A</b>		
(81-91) <b>B</b>		
(69-80) <b>C</b>		
(55-68) <b>D</b>		
(39-54) <b>E</b>		
(21-38) <b>F</b>		
(1-20) <b>G</b>		
Not environmentally friendly - higher CO2 emissions		
<b>England &amp; Wales</b>	EU Directive 2002/91/EC	



ESTATE AGENCY : REDEFINED