



Cedar Grove

Gillingham | ME7 3QT



REAL ESTATE

ESTATE AGENCY : REDEFINED

Cedar Grove

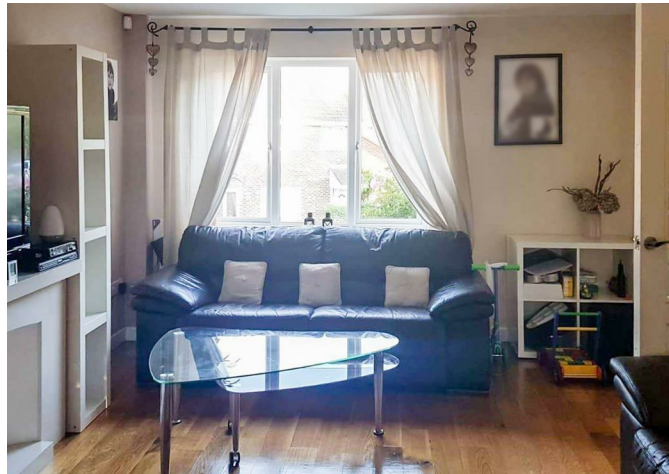
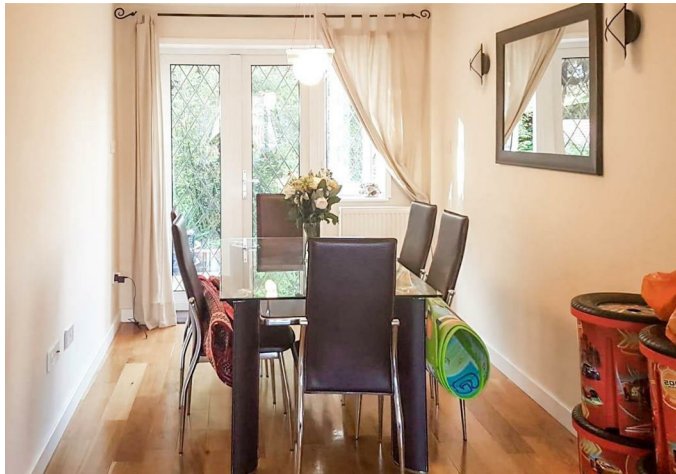
Hempstead, Gillingham, ME7 3QT

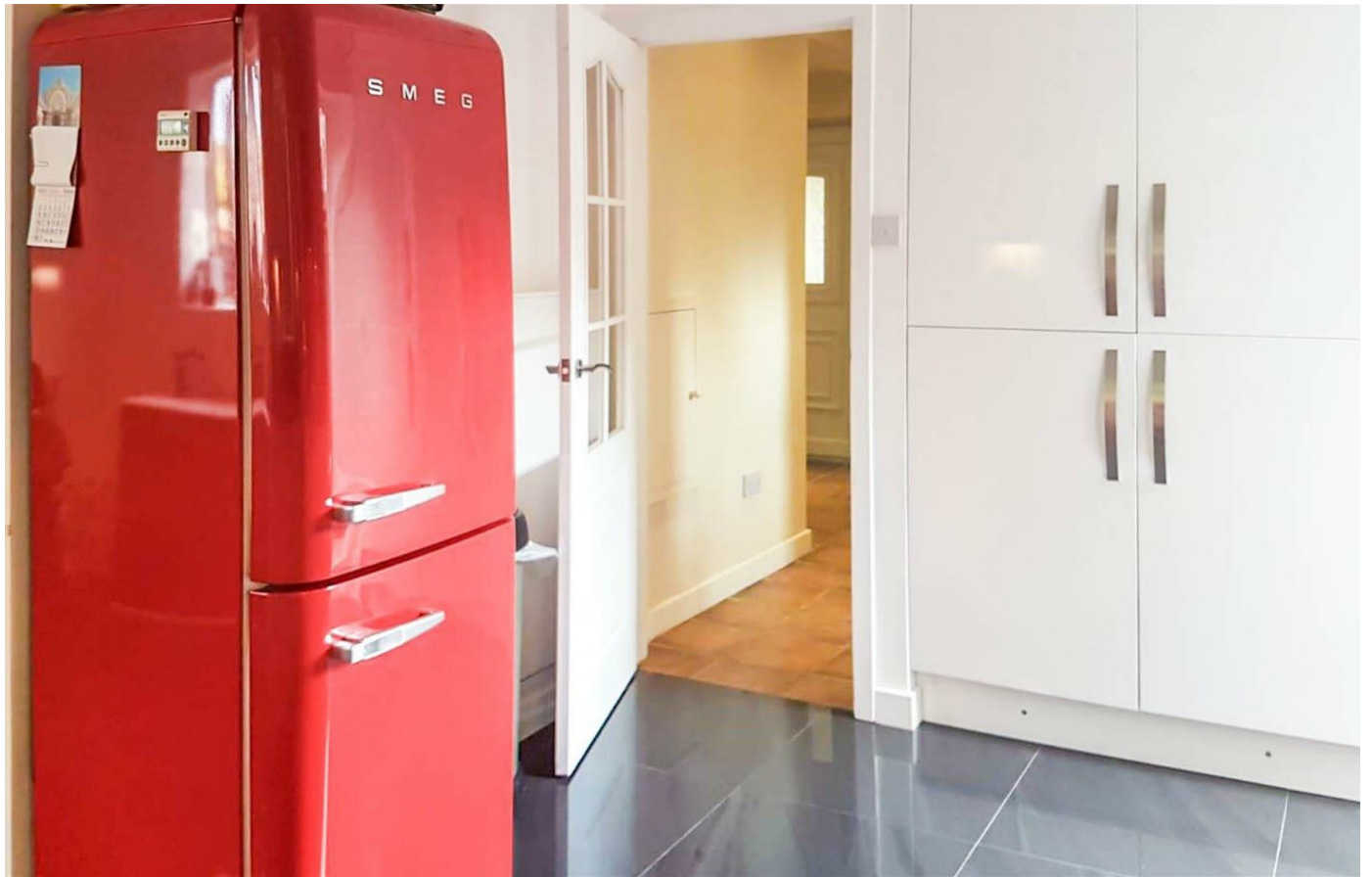
CR Real Estate are delighted to offer to the market this FULLY FURNISHED, four bedroom property in the popular residential location of Hempstead. The spacious property offers large living accommodation throughout with a lounge/diner, cloakroom/WC, separate study and a kitchen/diner. The first floor has the four separate bedrooms with the master benefiting from an en-suite bathroom as well as a separate family bathroom. Externally the property has an enclosed rear garden as well as off street parking and a garage. Please call us now to arrange your appointment to view.

CR Real Estate are part The Ombudsman Redress Scheme and are a member

- Four Bedroom Semi Detached
- Fully Furnished
- Cloakroom/WC
- Floor plan coming soon
- EPC Rating C
- Off Street Parking & Garage!
- En Suite Shower Room
- Rear Garden
- Holding Deposit £380
- Council Tax band E

£1,650 Per Calendar Month







REAL ESTATE
ESTATE AGENCY : REDEFINED

18 - 20 High Street
Gillingham
Kent
ME7 1BB

01634 570057

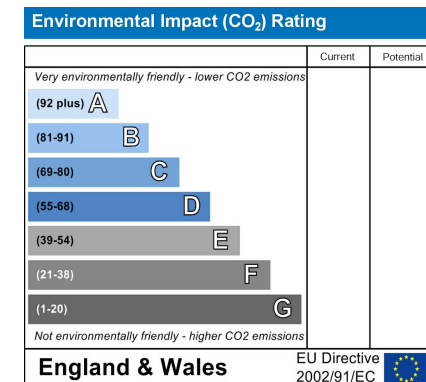
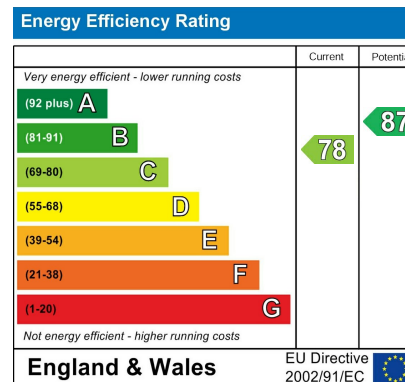
www.crralestate.co.uk

twitter.com/CRRealEstateUK

facebook.com/CRRealEstateUK



rightmove
find your happy



CR Real Estate endeavour to maintain accurate depictions of properties in Virtual Tours, Floor Plans and descriptions, however, these are intended only as a guide and purchasers must satisfy themselves by personal inspection.