



## Pear Tree Walk, Sittingbourne ME9 7NG

**£280,000**

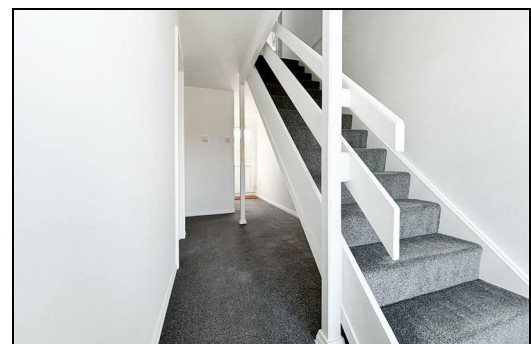
Welcome to Pear Tree Walk. CR Real Estate are proud to offer to the market, this refurbished three-bedroom terrace family home nestled in the quaint village of Newington in Sittingbourne.

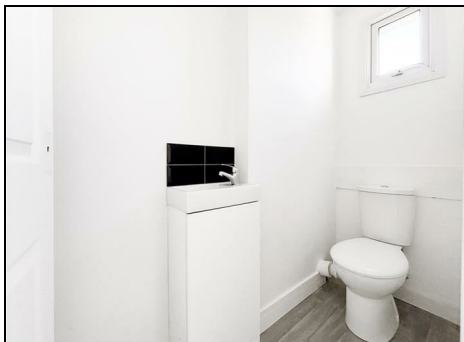
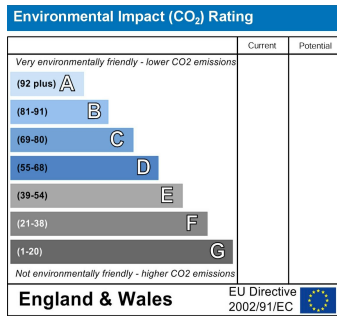
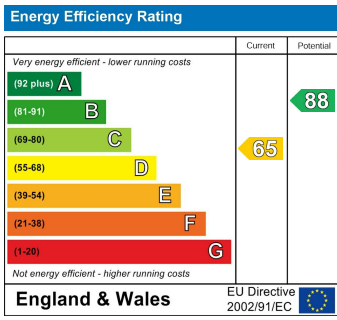
Recently renovated to an impeccable standard and offered with no onward chain, this home benefits from plenty of space and a neutral décor throughout. The ground floor features a generously sized living area, complemented by a convenient downstairs WC and a modern kitchen/diner with access to the rear garden. Ascending to the first floor, you will find three bedrooms, along with the family bathroom.

Externally, the property boasts a spacious rear garden complete with a brick-built shed, offering additional storage space, plus parking to the rear of the home.

Conveniently situated just a short stroll from Newington train station and with excellent road links via the A2, A249, and M2 motorway, this home offers easy access to a range of nearby amenities and the popular town centre of Sittingbourne.

Don't miss the opportunity to make this delightful property your own, book your viewing with us today and experience its charm first-hand.





ESTATE AGENCY : REDEFINED

