



Saunders Street
Gillingham | ME7 1HX



Saunders Street , Gillingham, ME7 1HX

Introducing this charming two-bedroom terraced house for sale with no onward chain. Conveniently located just a short stroll away from Gillingham Town Centre, this home presents an excellent opportunity for first-time buyers or investors looking to expand their buy-to-let portfolio.

Upon entering, you'll find a well sized lounge area, separate kitchen with integrated appliances, and a family bathroom on the ground floor. Ascend to the first floor, where you will discover two generously sized bedrooms. Adding to the appeal of this property is a useful cellar accessed by the Kitchen for additional storage space. Outside, a large garden to the rear offers ample space for outdoor activities, relaxation, and entertaining.

Don't miss out on the chance to make this property your own. Contact us today to schedule your appointment and experience all that this delightful home has to offer.

Offers Over £210,000



Lounge

10'3 x 9'11 (3.12m x 3.02m)

Kitchen

10'0 x 9'5 (3.05m x 2.87m)

Family Bathroom

9'5 x 5'6 (2.87m x 1.68m)

Cellar

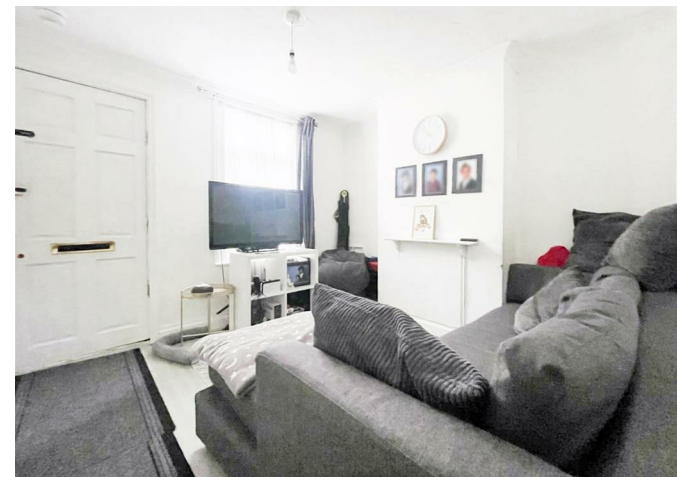
10'0 x 9'5 (3.05m x 2.87m)

Bedroom

10'3 x 9'11 (3.12m x 3.02m)

Bedroom

9'5 x 7'8 (2.87m x 2.34m)

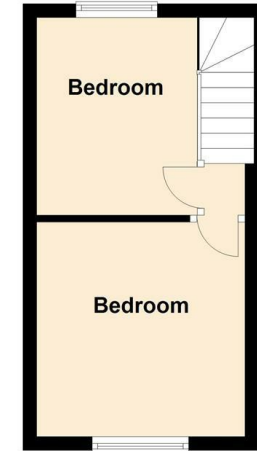
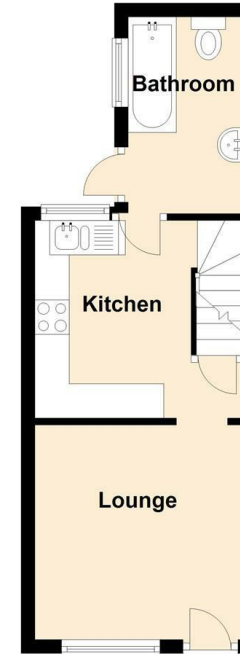
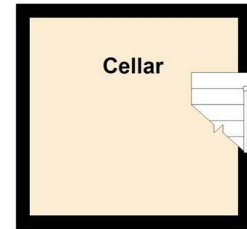




Ground Floor
Approx. 23.4 sq. metres (252.2 sq. feet)

Basement
Approx. 8.7 sq. metres (93.8 sq. feet)

First Floor
Approx. 18.5 sq. metres (198.9 sq. feet)



Total area: approx. 50.6 sq. metres (544.9 sq. feet)



18 - 20 High Street
Gillingham
Kent
ME7 1BB
01634 570057

www.crr realestate.co.uk
twitter.com/CRRealEstateUK
facebook.com/CRRealEstateUK



| Energy Efficiency Rating | | Current | Potential |
|---|--|-------------------------|-----------|
| Very energy efficient - lower running costs | | | |
| (92 plus) A | | | |
| (81-91) B | | | |
| (69-80) C | | | |
| (55-68) D | | | |
| (39-54) E | | | |
| (21-38) F | | | |
| (1-20) G | | | |
| Not energy efficient - higher running costs | | | |
| England & Wales | | EU Directive 2002/91/EC | |

| Environmental Impact (CO ₂) Rating | | Current | Potential |
|---|--|-------------------------|-----------|
| Very environmentally friendly - lower CO ₂ emissions | | | |
| (92 plus) A | | | |
| (81-91) B | | | |
| (69-80) C | | | |
| (55-68) D | | | |
| (39-54) E | | | |
| (21-38) F | | | |
| (1-20) G | | | |
| Not environmentally friendly - higher CO ₂ emissions | | | |
| England & Wales | | EU Directive 2002/91/EC | |

CR Real Estate endeavour to maintain accurate depictions of properties in Virtual Tours, Floor Plans and descriptions, however, these are intended only as a guide and purchasers must satisfy themselves by personal inspection.