



Pegasus Way, Gillingham ME7 1GQ

£46,500

Welcome to Peninsula Quay, Gillingham, where contemporary living meets convenience. CR Real Estate are proud to present to the market with no onward chain this modern studio apartment.

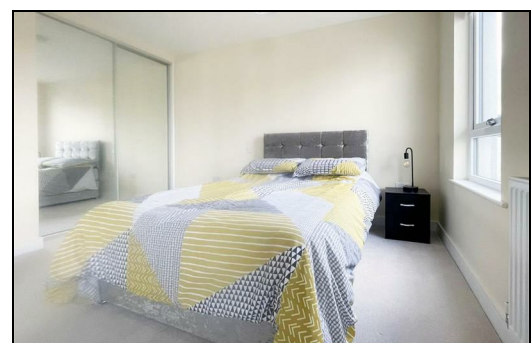
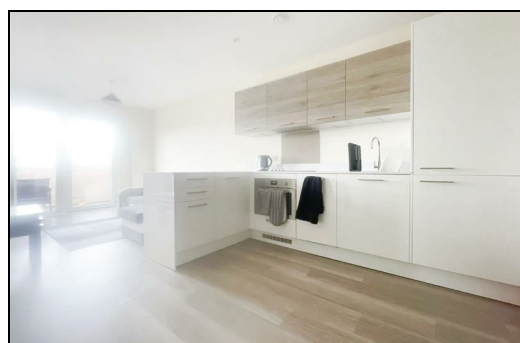
Situated within the popular Peninsula Quay development, this property is offered on a shared ownership basis, and prospective buyers will need to meet the criteria set by the housing association to secure this fantastic home.

Step inside and discover a thoughtfully designed space that seamlessly combines style and functionality. The open-plan living area boasts a modern fitted kitchen, storage cupboard, and leads round to the bedroom area which benefits from built-in wardrobe space. Furthermore, you have your own stylish bathroom, complete with a toilet, sink, and a bath featuring a shower. Step outside from the living area onto your own private balcony, offering a delightful outdoor space to unwind and enjoy the surroundings.

This studio apartment comes with a designated parking space, ensuring both security and convenience. Additionally, residents have the opportunity to utilise the communal gym, communal gardens and WIFI lounge, ideal for both work and leisure activities.

Nestled conveniently in Gillingham, you will have easy access to a diverse range of local shops, restaurants, and the popular Dockside Shopping Outlet, which features an Odeon cinema complex. Ideal for commuters, Gillingham train station is a short walk away, providing excellent railway connections to nearby areas and London; or for those who prefer driving, the A2, M2, and M20 are easily accessible.

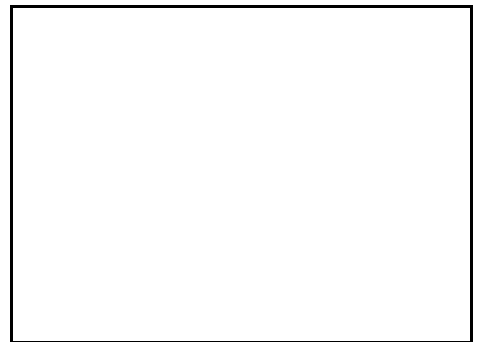
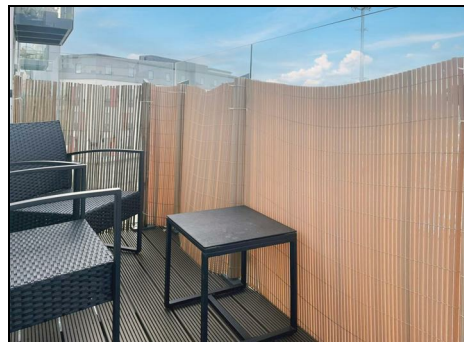
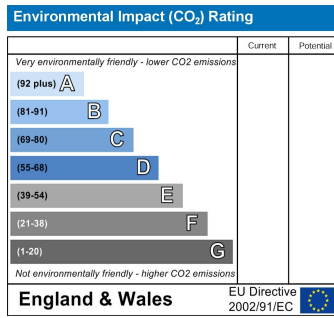
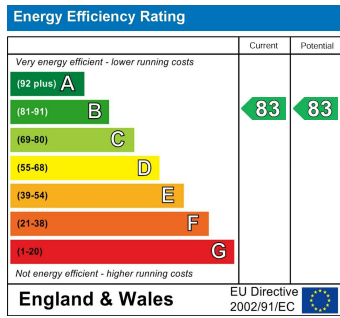
Don't miss out on the chance to view this modern and well-connected home, contact us to book your appointment and explore the endless possibilities this studio apartment at Peninsula Quay has to offer.



Open Plan Living Room 21'11 x 10'8 (6.68m x 3.25m)

Bedroom Area 12'8 x 8'4 (3.86m x 2.54m)

Family Bathroom 6'7 x 6'11 (2.01m x 2.11m)



ESTATE AGENCY : REDEFINED

