



Waterloo Road, Gillingham ME7 4SA

Offers In Excess Of £240,000

CR Real Estate are delighted to offer for sale this charming two-bedroom mid-terrace home situated in the heart of Gillingham. Boasting a convenient location and spacious layout, this property offers an ideal opportunity for both homeowners and investors.

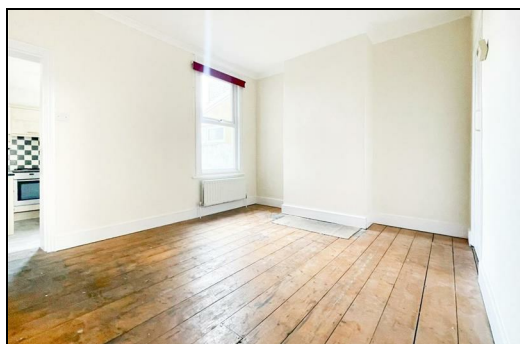
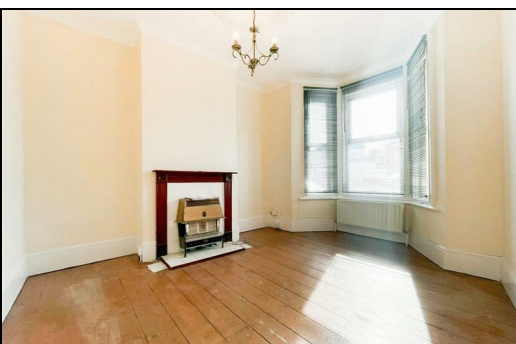
Upon entering, you are greeted by a welcoming hallway leading to two well-sized reception rooms, ideal for entertaining guests or unwinding after a long day. The fitted kitchen benefits from integrated appliances and provides convenient access to the rear garden. Additionally, the cellar accessed via the dining room offers additional storage space in the home.

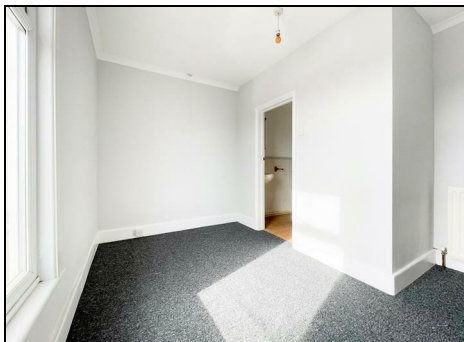
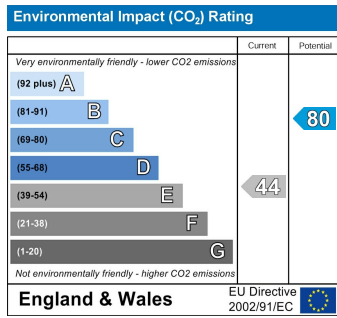
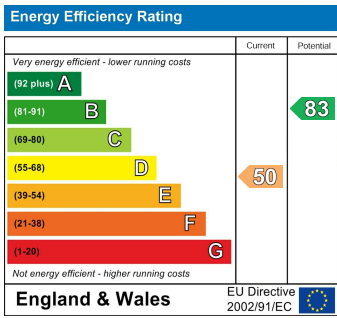
Ascending to the first floor, you'll discover two double bedrooms, with the master bedroom featuring an ensuite bathroom. While the second bedroom also has access to another upstairs bathroom.

Outside, you will find the generously sized rear garden with grass lawn and outdoor storage area; plus, on-road parking to the front of the home.

Conveniently positioned, Waterloo Road has easy access to the town centre, providing a variety of nearby amenities and shops. Additionally, Gillingham Train Station and Medway Maritime Hospital are just a ten-minute walk away.

Don't miss your opportunity to make this delightful house your new home, contact us today to arrange a viewing and experience all that this property has to offer.





ESTATE AGENCY : REDEFINED

