



Buckland Place, Maidstone ME16 0SJ

Offers In Excess Of £325,000

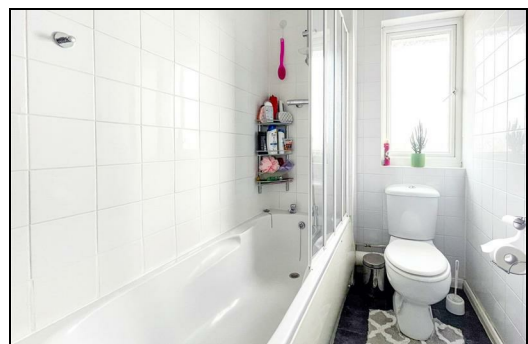
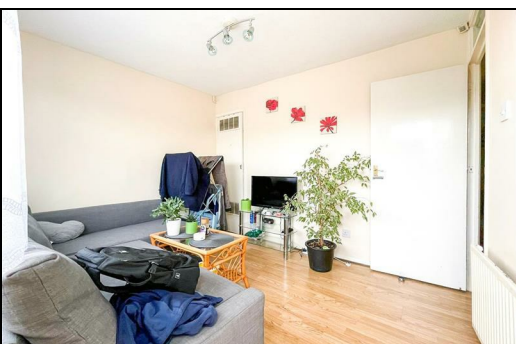
CR Real Estate are delighted to present this versatile four-bedroom townhouse located in the heart of Maidstone town centre.

Upon entering the first level, you're greeted by a spacious entrance hall providing access to the garage, a convenient downstairs WC, a welcoming living room, and a door leading to the well-maintained rear garden.

On the first floor, you'll find a double bedroom and a kitchen diner, offering a comfortable and functional living space. The top floor boasts another three bedrooms along with a family bathroom, completing the well-thought-out layout of this townhouse.

Conveniently situated in close proximity to Maidstone town centre and train station, the property provides easy access to a variety of amenities, including shops, restaurants, schools and transport links.

Don't miss the chance to explore the full potential of this charming townhouse. Contact us today to arrange a viewing and secure your new investment opportunity in Buckland Place, Maidstone.



Entrance Hall

Garage

Downstairs WC

Living Room

Kitchen Diner

Bedroom One

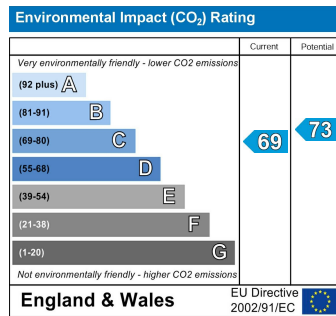
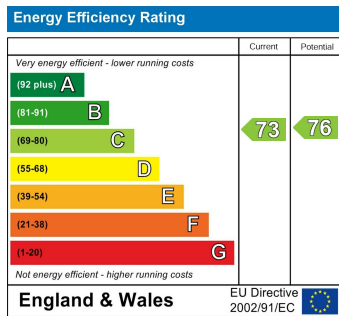
Bedroom Two

Bedroom Three

Bedroom Four

Bathroom

Garden



ESTATE AGENCY : REDEFINED

