



REAL ESTATE

ESTATE AGENCY : REDEFINED



Buckland Place, Maidstone ME16 0SJ

Offers In Excess Of £325,000

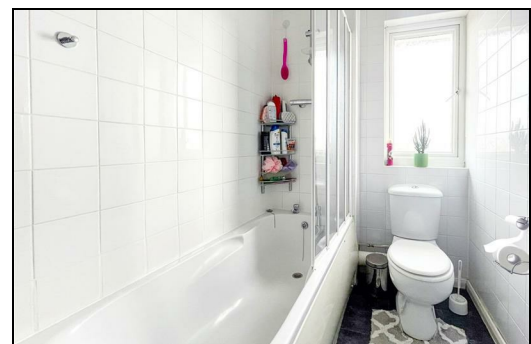
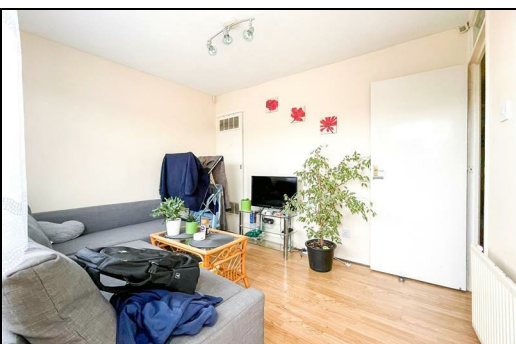
CR Real Estate are delighted to present this versatile four-bedroom townhouse located in the heart of Maidstone town centre.

Upon entering the first level, you're greeted by a spacious entrance hall providing access to the garage, a convenient downstairs WC, a welcoming living room, and a door leading to the well-maintained rear garden.

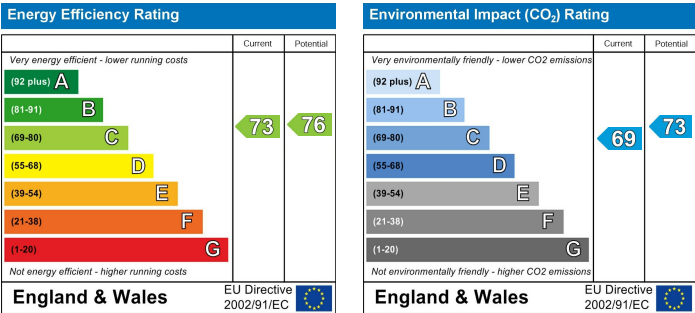
On the first floor, you'll find a double bedroom and a kitchen diner, offering a comfortable and functional living space. The top floor boasts another three bedrooms along with a family bathroom, completing the well-thought-out layout of this townhouse.

Conveniently situated in close proximity to Maidstone town centre and train station, the property provides easy access to a variety of amenities, including shops, restaurants, schools and transport links.

Don't miss the chance to explore the full potential of this charming townhouse. Contact us today to arrange a viewing and secure your new investment opportunity in Buckland Place, Maidstone.



- Entrance Hall
- Garage
- Downstairs WC
- Living Room
- Kitchen Diner
- Bedroom One
- Bedroom Two
- Bedroom Three
- Bedroom Four
- Bathroom
- Garden



ESTATE AGENCY : REDEFINED

