



**Bayswater Drive**  
Gillingham | ME8 8SY





# Bayswater Drive

## Rainham, Gillingham, ME8 8SY

CR Real Estate are delighted to present this extended three-bedroom family home, available with no onward chain. Nestled in a prime location in Rainham, this property boasts a perfect blend of comfort, convenience, and contemporary living.

Step inside to discover a bright and spacious lounge, offering a welcoming atmosphere for relaxation and entertainment. The open-plan kitchen diner, with its modern design and integrated appliances also features a convenient small utility area; and seamlessly connects the heart of the home to a large rear garden space. To the upper level, you will find a landing space with storage cupboard, three generously sized bedrooms and a modern family bathroom.

Bayswater Drive is in close proximity to local shops, public transport routes, and multiple good rated primary and secondary schools. Further advantages of this home include being a short drive from Rainham train station and easy accessibility to the M2 motorway, making commuting a breeze.

This family home is available now, presenting a great opportunity for you to make it your own. Don't miss out – contact us today to arrange your viewing and discover the wonderful lifestyle that awaits you in this delightful property.



Offers Over £295,000





## Entrance Porch

## Lounge

15'11 x 11'2 (4.85m x 3.40m)

## Kitchen/Diner

17'2 x 15'11 (5.23m x 4.85m)

## Utility Room

6'1 x 3'10 (1.85m x 1.17m)

## Bedroom

8'11 x 6'7 (2.72m x 2.01m)

## Bedroom

8'7 x 8'4 (2.62m x 2.54m)

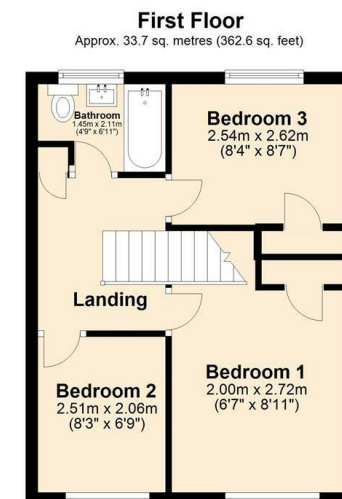
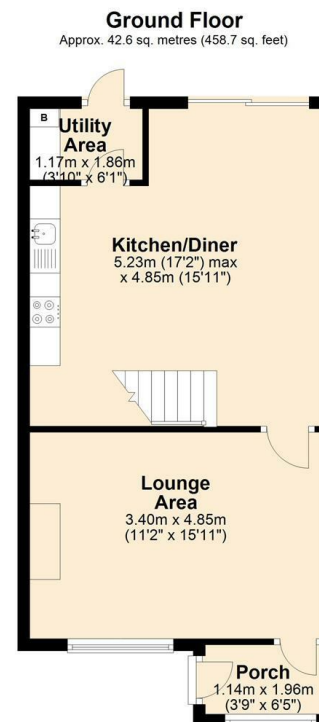
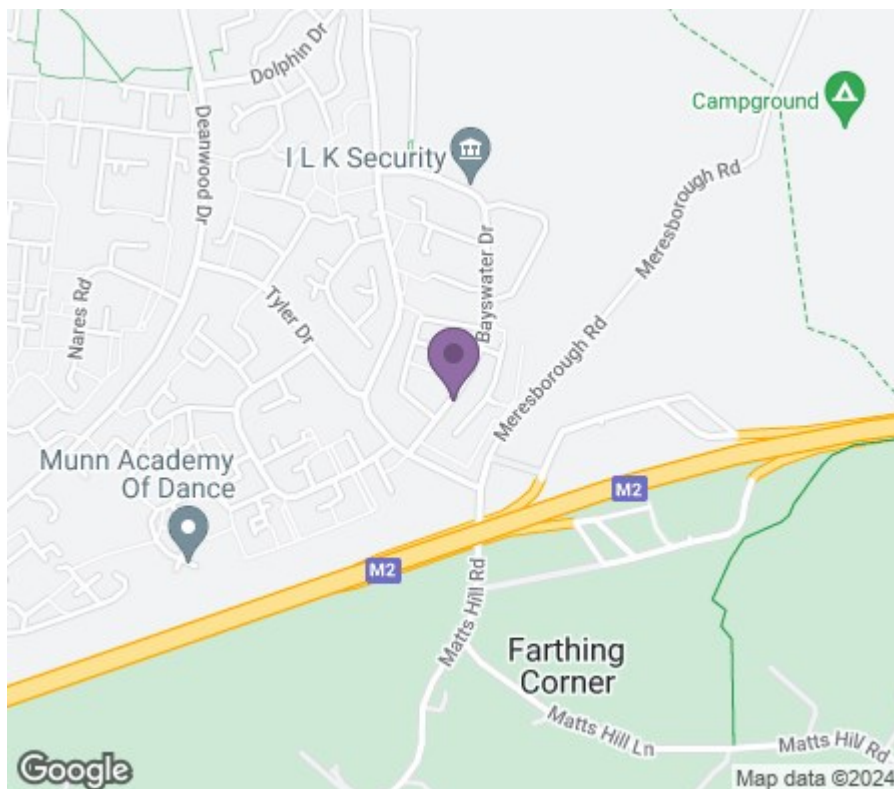
## Bedroom

8'3 x 6'9 (2.51m x 2.06m)

## Bathroom

6'11 x 4'9 (2.11m x 1.45m)





Total area: approx. 76.3 sq. metres (821.3 sq. feet)



**REAL ESTATE**  
ESTATE AGENCY : REDEFINED

18 - 20 High Street  
Gillingham  
Kent  
ME7 1BB

**01634 570057**

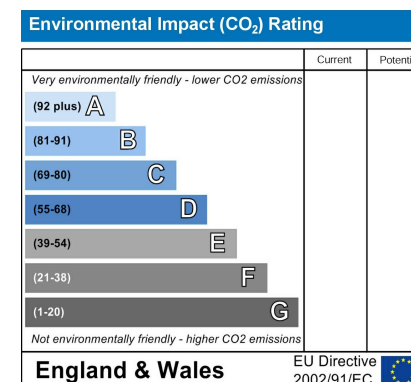
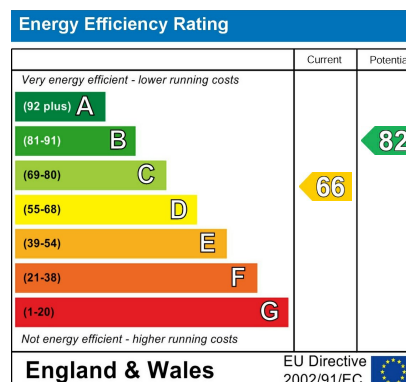
[www.crralestate.co.uk](http://www.crralestate.co.uk)

[twitter.com/CRRRealEstateUK](https://twitter.com/CRRRealEstateUK)

[facebook.com/CRRRealEstateUK](https://facebook.com/CRRRealEstateUK)



**rightmove**  
find your happy



CR Real Estate endeavour to maintain accurate depictions of properties in Virtual Tours, Floor Plans and descriptions, however, these are intended only as a guide and purchasers must satisfy themselves by personal inspection.