



REAL ESTATE

ESTATE AGENCY : REDEFINED



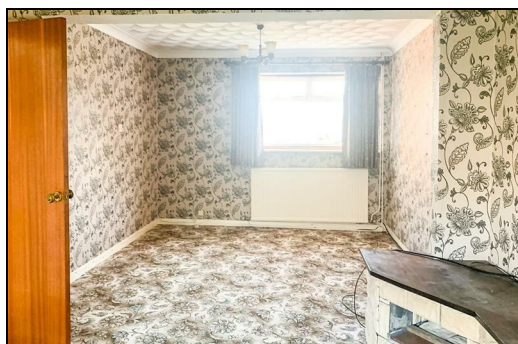
**Vidgeon Avenue, Rochester ME3 9DD**

**£275,000**

CR Real estate are pleased to bring to market this fabulous two bedroom semi-detached bungalow. Offering tons of potential and with the added benefit of No forward chain and parking. Located in the popular residential area of Hoo, this property is a must see. Benefiting from direct access the M2, Hoo village and plenty of green spaces are within walking distance to this Gem of a property.

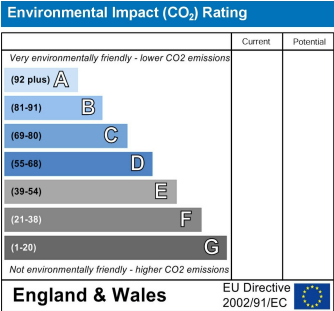
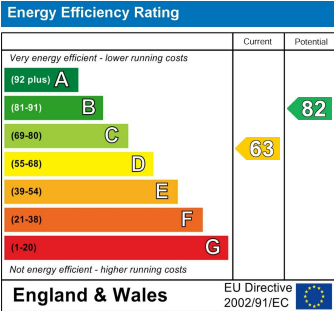
Upon entry you will be pleased to find two double bedrooms, the hallway and bathroom. The impressive lounge- diner has patio doors leaving out to the Westerly facing garden and the kitchen offers garden access too.

If you are looking for an opportunity to put your stamp on a property then look no further. Please call CR real estate today to arrange your viewing.





- Kitchen** 9'08 x 9'03 (2.95m x 2.82m)
- Bedroom 1** 12'01 x 10'07 (3.68m x 3.23m)
- Bedroom 2** 8'02 x 8'10 (2.49m x 2.69m)
- Bathroom** 6'04 x 5'04 (1.93m x 1.63m)
- Lounge - Diner** 12'07 x 22'10 (3.84m x 6.96m)



ESTATE AGENCY : REDEFINED

