



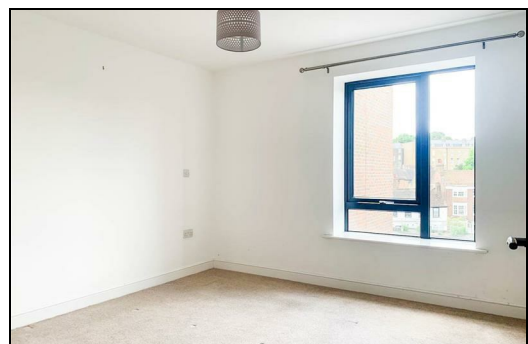
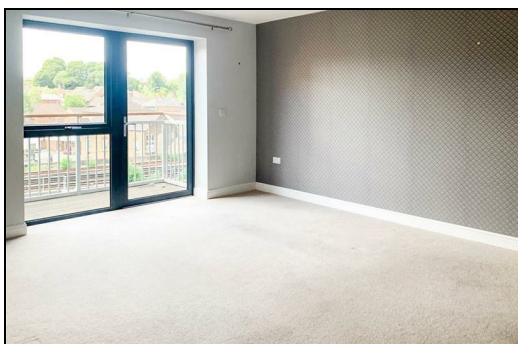
Doust Way, Rochester ME1 1FF

£190,000

CR Real Estate are pleased to market for sale with no onward chain, this one-bedroom apartment located in the popular and historic town of Rochester.

This modern top floor apartment offers a light and bright feel; and boasts spacious accommodation throughout consisting of an entrance hall, open plan kitchen/lounge with integrated appliances and doors leading to the private balcony, storage closet, double bedroom, and modern fitted bathroom with bath, shower, basin and w/c. Benefiting from a neutral décor throughout, this home is ready to move into and is the perfect canvas to add your own style. This impressive apartment offers many benefits including a long lease of approximately 115 years, lift access to all floors, and allocated parking.

Perfectly positioned in a quiet residential development close to the River Medway and Rochester High Street; the apartment is within easy access of a variety of local amenities, restaurants, schools and is a mere 11 minute drive away to 3 universities and 2 colleges for those who are studying. Additionally there are fantastic transport options close by including Rochester train station which is within 15 minutes' walk and offers rail links to London and South Coast; plus the A2/M2 motorways are within easy access for those who prefer to drive. The popular Dockside Shopping Outlet is located within a 12 minute drive which also benefits from an Odeon cinema complex.



Bedroom

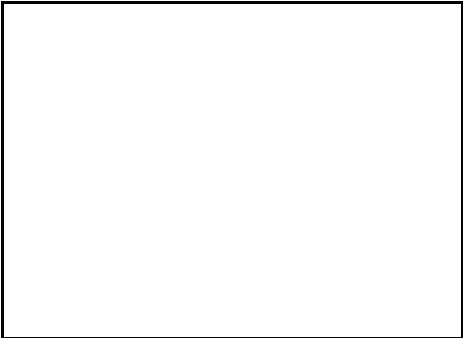
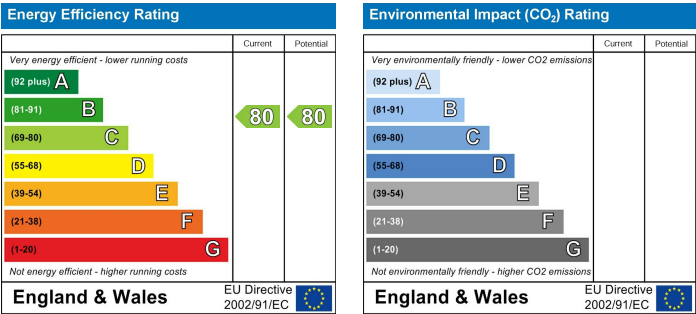
11'3" x 11'0" (3.43 x 3.37)

Living room and kitchen

22'3" x 12'11" (6.80 x 3.94)

Bathroom

6'5" x 6'10" (1.98 x 2.09)



ESTATE AGENCY : REDEFINED

