



## Zetland Avenue, Gillingham ME7 3AE

**Offers Over £400,000**

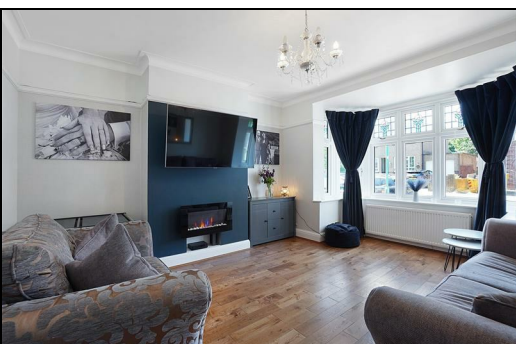
CR Real Estate are proud to present to the market this stunning three-bedroom family home in the well sought after Darland location within Gillingham.

This property is the perfect home and offers ample living accommodation for any growing family; plus it is ready to move into with modern and neutral décor throughout, meaning that this property is easily adaptable to add your own personal touches and style.

The ground floor of this property comprises of an entrance hall, spacious lounge with bay window, kitchen, separate dining area with access to the downstairs W/C and large conservatory which offers access to the rear garden via French doors. The first floor offers the newly completed family shower room with modern stainless steel shower, three double bedrooms, and the opportunity to add a fourth bedroom via the loft (STPP).

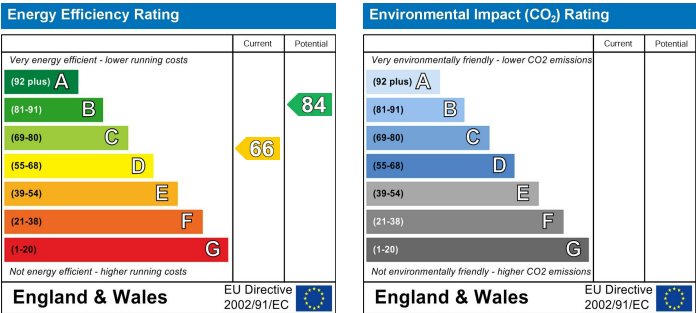
Externally, this property benefits from off road parking to the front with a driveway; plus a generously sized rear garden with paved patio areas, grass lawn and summer house/home bar to remain which benefits from installed air-conditioning.

Zetland Avenue is well located within the area and is close by to a variety of local amenities, shops and schools including Chatham Grammar, The Robert Napier School, Byron Primary School, Featherby Junior School, Luton Primary School, Barnsole primary school, and Danecourt Special School. Additionally, Medway Maritime Hospital is within 6 minutes' drive away, plus the Anchorians Sports Facilities and Gillingham Golf Club are both located close by. For commuters, and Gillingham train station is within a 7 minute drive and offers fantastic railway links to the surrounding areas and London.





- Porch
- Entrance Hall
- Lounge 15'0" x 12'7" (4.59 x 3.85)
- Dining Room 13'11" x 11'0" (4.26 x 3.36)
- Kitchen 15'0" x 7'2" (4.58 x 2.20)
- Conservatory 14'11" x 12'6" (4.57 x 3.83)
- WC 5'7" x 3'2" (1.72 x 0.99)
- Bedroom One 15'0" x 11'7" (4.59 x 3.55)
- Bedroom Two 12'0" x 11'7" (3.66 x 3.55)
- Bedroom Three 7'6" x 6'7" (2.31 x 2.01)
- Bathroom 6'7" x 6'5" (2.01 x 1.96)
- Garden
- Summer House 14'0" x 9'1" (4.27 x 2.79)



ESTATE AGENCY : REDEFINED

