



High Street, Sheerness ME12 1RN

£1,000 Per Calendar Month

Call now before it is too late, available now is this large split-level apartment in Bluetown High Street. With a range of local shops and pubs in easy walking distance, this is sure to be in demand, so an early call is advised to avoid disappointment. Please note the property is set over the 1st and 2nd floors. Demand is expected to be high and as such an early call is advised!

Measurements

1st Floor

Lounge 31'6 x 12'5

Kitchen 10'5 x 12'4

Bathroom 12'5 x 6'10

2nd Floor

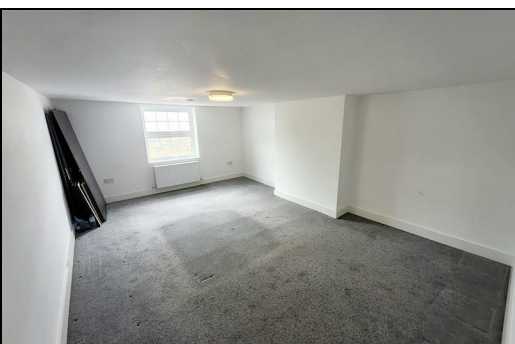
Bedroom 17'8 x 12'4

Bedroom 13'1 x 9'7

CR Real Estate are part The Ombudsman Redress Scheme and are a member of the Propertymark Client Money Protection Scheme. Tenant deposits are protected by the Tenancy Deposit Scheme. For more information, please contact us.

Client Money Protection is provided by: Client Money Protect. Scheme Ref: CMP004209

Independent redress is provided by: The Property Ombudsman (TPO). Membership Number: E01687



Energy Efficiency Rating		
	Current	Potential
Very energy efficient - lower running costs		
(92 plus) A		
(81-91) B		
(69-80) C		
(55-68) D		
(39-54) E		
(21-38) F		
(1-20) G		
Not energy efficient - higher running costs		
England & Wales	EU Directive 2002/91/EC	

Environmental Impact (CO ₂) Rating		
	Current	Potential
Very environmentally friendly - lower CO ₂ emissions		
(92 plus) A		
(81-91) B		
(69-80) C		
(55-68) D		
(39-54) E		
(21-38) F		
(1-20) G		
Not environmentally friendly - higher CO ₂ emissions		
England & Wales	EU Directive 2002/91/EC	



ESTATE AGENCY : REDEFINED

