



Ivy Street, Gillingham ME8 8BE

Prices From **£375,000**

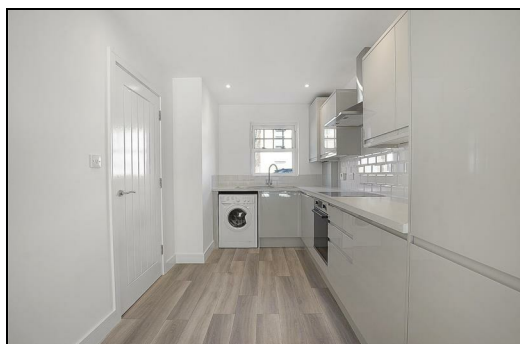
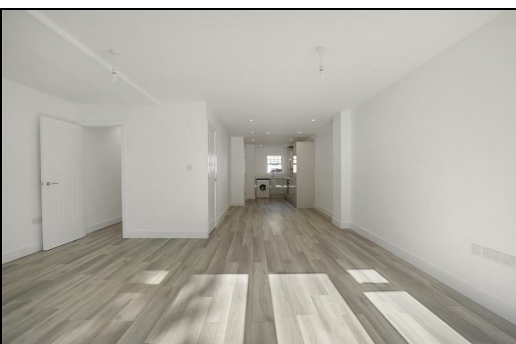
CR Real Estate are pleased to offer for sale this modern three double bedroom new build property, conveniently located in the ever popular town of Rainham. This property is part of five new build homes available to purchase.

Set over three floors, this immaculate home offers ample living accommodation for all the family to enjoy; and is ready to move in to with neutral décor throughout, meaning that this home is easily adaptable to add your own personal touches and style. Additional enhancements of this stunning home also include all zoned heating; with under floor heating to the ground level, and then zoned heating to the first and second levels.

The ground floor of this property comprises of an entrance hall, open plan lounge/diner, modern kitchen with integrated appliances and French doors offering access to the rear garden, and downstairs W/C. The first floor offers two double bedrooms and the family bathroom; and then to the second floor is the master double bedroom.

Externally, this property benefits from off road parking to the front with driveway, electric charging point and front external tap; plus a generously sized rear garden with paved patio area and grass lawn.

Ivy Street is well located within the area and is within easy access of a variety of local amenities and schools including the new Leigh Academy, Miers Court Primary School, Thames View Primary School, Rainham School for Girls, and Rainham Mark Grammar School. Additionally for commuters, Rainham train station is within 5 minutes' walk away and offers fantastic railway links to the surrounding areas and London; and for those who prefer to drive the A2, M2, and M20 is within easy access.



Entrance hall

Shower Room

9'1" by 4'11" (2.79 by 1.5)

Kitchen Area

11'0" by 7'7" (3.36 by 2.32)

Dining Area

Lounge Area

27'11" by 17'1" (8.52 by 5.23)

Study

11'6" by 5'0" (3.51 by 1.53)

Stairs too

Bedroom Two

12'3" by 9'6" (3.75 by 2.90)

Bedroom Three

12'3" by 9'11" (3.75 by 3.04)

Family Bathroom

3'4" by 5'6" (1.04 by 1.70)

Stairs too

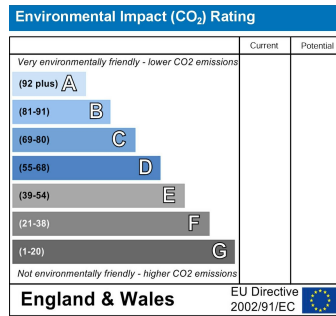
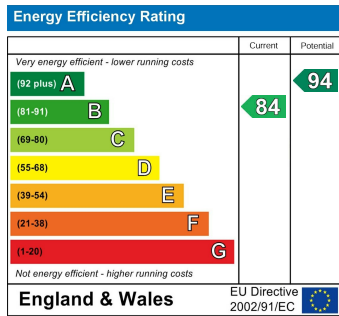
Master Bedroom

22'5" by 12'3" (6.85 by 3.75)

External

Rear Garden

Driveway



ESTATE AGENCY : REDEFINED

