



### Richmond Road, Gillingham ME7 1LX

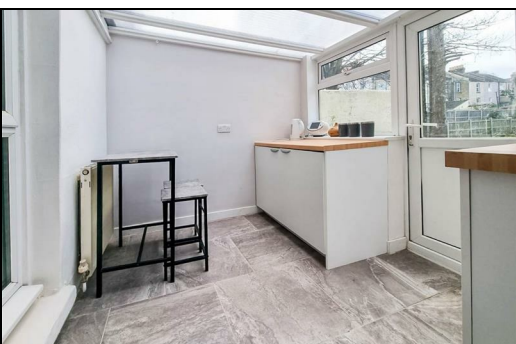
**£950 Per Calendar Month**

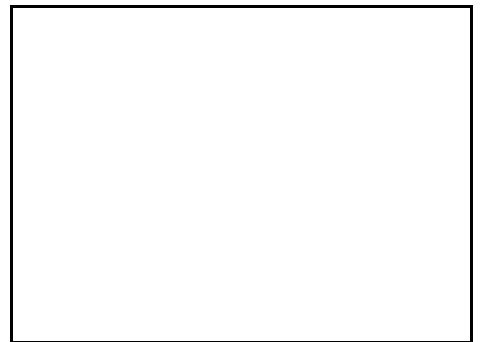
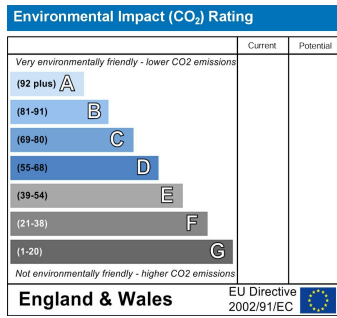
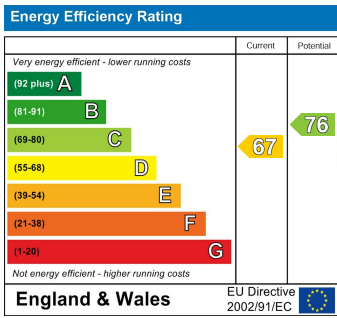
\*\*\*BACK ON THE MARKET\*\*\*CR REAL ESTATE are delighted to offer this spacious one bedroom flat with own entrance and private garden. The property consists of lounge with bay window, hallway, double bedroom, modern kitchen, dining area in conservatory, and newly fitted shower room. Offered partly furnished and available for viewings from now.

CR Real Estate are part The Ombudsman Redress Scheme and are a member of the Propertymark Client Money Protection Scheme. Tenant deposits are protected by the Tenancy Deposit Scheme. For more information, please contact us.

Client Money Protection is provided by: Client Money Protect. Scheme Ref: CMP004209

Independent redress is provided by: The Property Ombudsman (TPO). Membership Number: E01687





**ESTATE AGENCY : REDEFINED**

