



Claridge Court
Gillingham | ME7 3NE

Claridge Court

Hempstead, Gillingham, ME7 3NE

CR Real Estate are proud to offer for sale this four-bedroom executive detached family home located in the well sought after area of Hempstead, originally named Claridge House. This property offers ample amounts of space and living accommodation, and benefits from a neutral décor throughout.

The ground floor of the home offers a large kitchen/diner, two spacious reception rooms one benefiting from a working wood burning fireplace, cloakroom and conservatory which offers access to the rear garden and internal access to the double garage. To the first floor is the well sized family bathroom and four double bedrooms, with the master benefiting

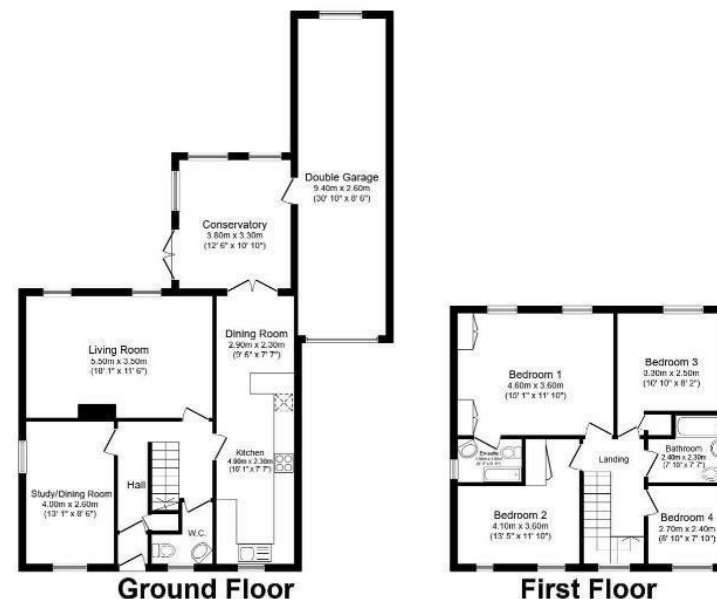
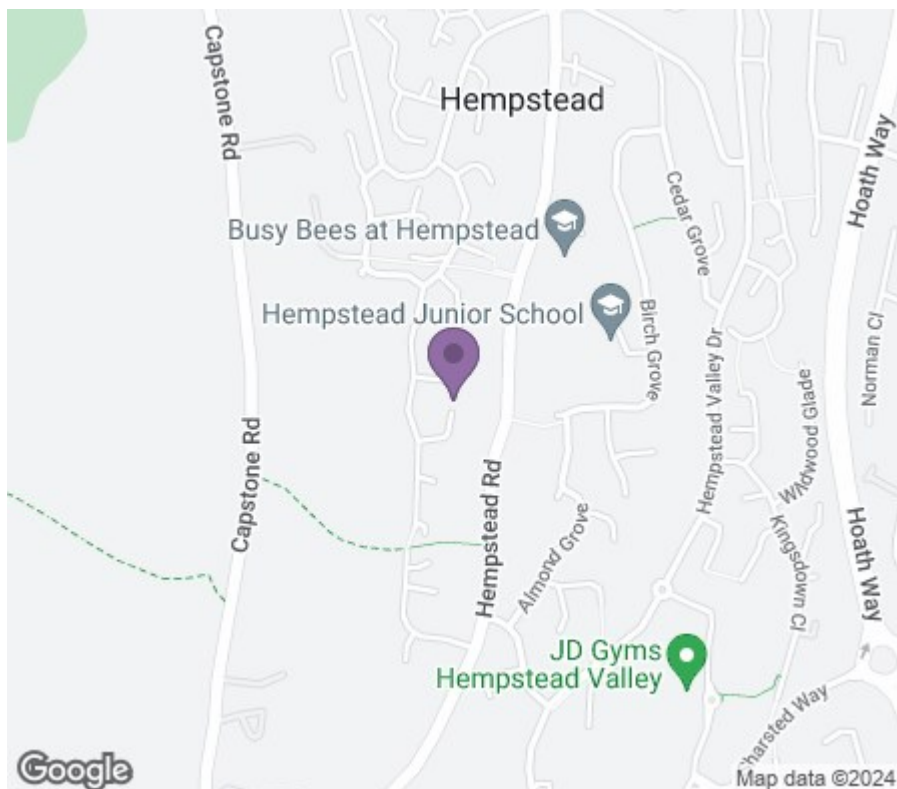
- Executive Four Double Detached House
- Double Garage With Electric Car Charging Point
- High Speed Links Into London St. Pancras
- Private Driveway For Five Cars
- Hempstead Location & Walking Distance To Schools
- Council Tax Band F

Offers Over £600,000



Entrance Hall
Study/Dining Room
Lounge
Kitchen/Diner
Downstairs WC
Conservatory
Master Bedroom
En Suite Bathroom
Bedroom Two
Bedroom Three
Bedroom Four
External
Rear garden
Double Garage
Driveway





Total floor area 169.5 sq.m. (1,825 sq.ft.) approx

This floor plan is for illustrative purposes only. It is not drawn to scale. Any measurements, floor areas (including any total floor area), openings and orientation are approximate. No details are guaranteed, they cannot be relied upon for any purpose and they do not form part of any agreement. No liability is taken for any error, omission or misstatement. A party must rely upon its own inspection(s).
Plan produced for Your Move. Powered by www.localagent.com



REAL ESTATE
ESTATE AGENCY : REDEFINED

18 - 20 High Street
Gillingham
Kent
ME7 1BB

01634 570057

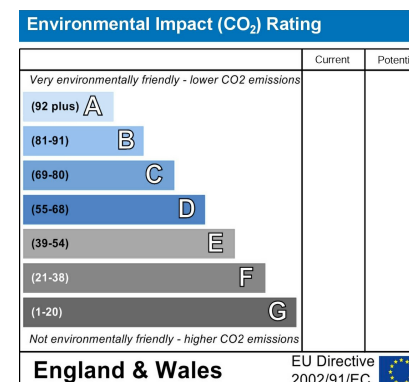
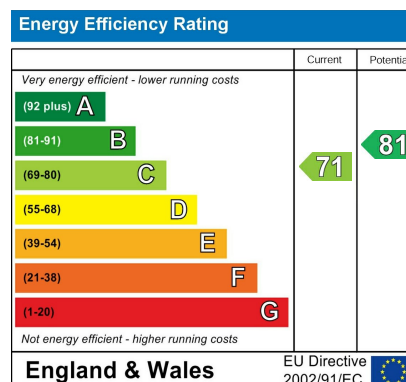
www.crralestate.co.uk

twitter.com/CRRRealEstateUK

facebook.com/CRRRealEstateUK



rightmove
find your happy



CR Real Estate endeavour to maintain accurate depictions of properties in Virtual Tours, Floor Plans and descriptions, however, these are intended only as a guide and purchasers must satisfy themselves by personal inspection.