



REAL ESTATE

ESTATE AGENCY : REDEFINED



Lyon Court, Rochester ME1 1HX

£945 Per Calendar Month

OFFERED WITH ZERO DEPOSIT SCHEME. CR Real Estate are excited to offer to the market this spacious one bedroom apartment located in the heart of Rochester. Within walking distance to the train station and town centre this property is not one to be missed!

The property is situated in a gated development and boasts spacious open plan kitchen/diner, master double bedroom with modern bathroom.

The property also benefits from an allocated parking space.

Available Mid March

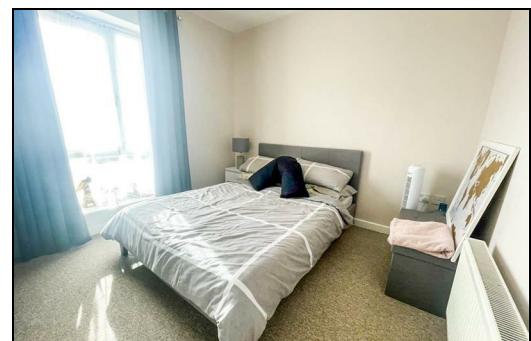
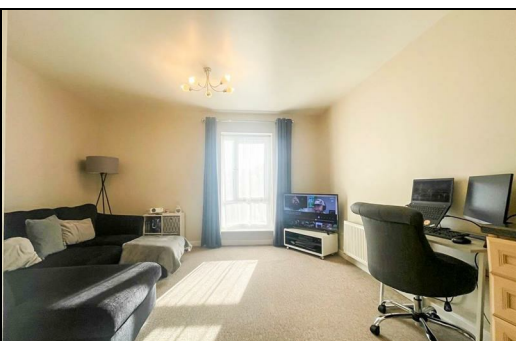
EPC Rating - B


Council Tax band - B


CR Real Estate are part The Ombudsman Redress Scheme and are a member of the Propertymark Client Money Protection Scheme. Tenant deposits are protected by the Tenancy Deposit Scheme. For more information, please contact us.

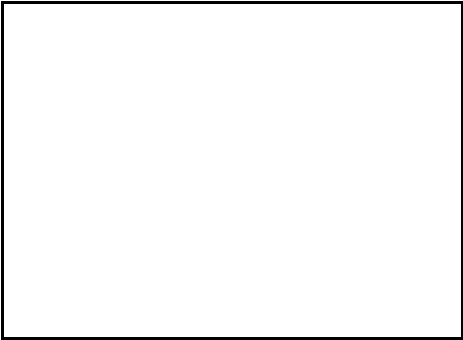
Client Money Protection is provided by: Client Money Protect. Scheme Ref: CMP004209

Independent redress is provided by: The Property Ombudsman (TPO). Membership Number: E01687



Energy Efficiency Rating		
	Current	Potential
Very energy efficient - lower running costs		
(92 plus) A		
(81-91) B		
(69-80) C		
(55-68) D		
(39-54) E		
(21-38) F		
(1-20) G		
Not energy efficient - higher running costs		
England & Wales	EU Directive 2002/91/EC	

Environmental Impact (CO ₂) Rating		
	Current	Potential
Very environmentally friendly - lower CO2 emissions		
(92 plus) A		
(81-91) B		
(69-80) C		
(55-68) D		
(39-54) E		
(21-38) F		
(1-20) G		
Not environmentally friendly - higher CO2 emissions		
England & Wales	EU Directive 2002/91/EC	



ESTATE AGENCY : REDEFINED