



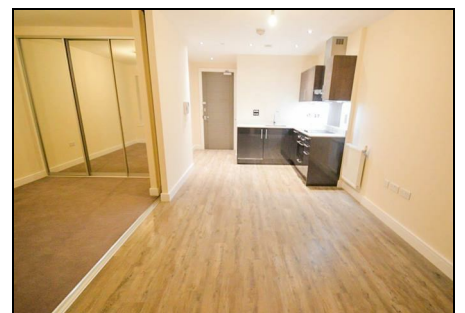
## Pegasus Way, Gillingham ME7 1GE

### £900 Per Calendar Month

CR Real Estate are proud to offer for rental this super studio 5th floor apartment situated in the highly sought after peninsula, a striking development built by Berkley Homes! Internally the property offers an open plan living area/modern kitchen, bedroom separated by sliding doors and modern bathroom. The property comes with underground parking, Residents gym & Wi-Fi lounge, stunning landscaped surroundings, timber effect flooring, Sky+ wired to communal satellite dish, Contemporary designed kitchen with fitted wall and base units, fitted fridge and dishwasher, integrated electric oven, hob, washing machine and more! Please call now to arrange your viewing!

Council tax band C  
EPC Rating C

- Stunning studio Apartment
- Holding deposit £207.00
- Residents' Gym & Wi-Fi Lounge
- Secure Underground Parking
- Fitted Fridge/Freezer and Dishwasher
- Available February
- Beautiful River Views
- Council tax band C
- EPC RATING C
- Highly Sought After Area



Energy Efficiency Rating		Environmental Impact (CO <sub>2</sub> ) Rating	
Very energy efficient - lower running costs	Control	Very environmentally friendly - lower CO <sub>2</sub> emissions	Control
(91-91) <b>A</b>		(91-91) <b>A</b>	
(81-91) <b>B</b>		(81-91) <b>B</b>	
(61-81) <b>C</b>		(61-81) <b>C</b>	
(51-61) <b>D</b>		(51-61) <b>D</b>	
(31-51) <b>E</b>		(31-51) <b>E</b>	
(21-31) <b>F</b>		(21-31) <b>F</b>	
(1-21) <b>G</b>		(1-21) <b>G</b>	
Not energy efficient - higher running costs		Not environmentally friendly - higher CO <sub>2</sub> emissions	
<b>England &amp; Wales</b>	EU Directive 2002/91/EC	<b>England &amp; Wales</b>	EU Directive 2002/91/EC