



REAL ESTATE

ESTATE AGENCY : REDEFINED



Greenvale Gardens, Gillingham ME8 6HB

£1,400 Per Calendar Month

CR Real Estate are delighted to offer this three bedroom family home in Twydall, Gillingham available now. Offering garage, driveway and rear garden. On the ground floor is the integrated garage and spacious kitchen, first floor offers lounge and bedroom, top floor is two further double bedrooms and bathroom. New flooring and decor throughout.

EPC Rating D

Council Tax Band B

Measurements

Kitchen 3.44m x 3.48m

Garage 4.72m x 2.39m

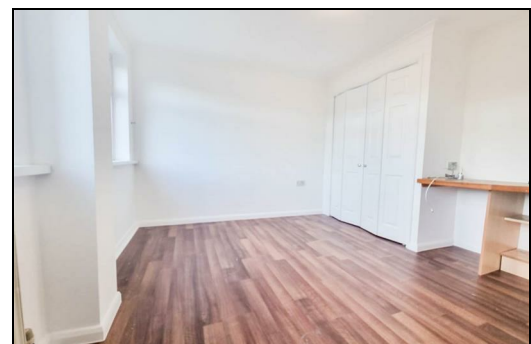
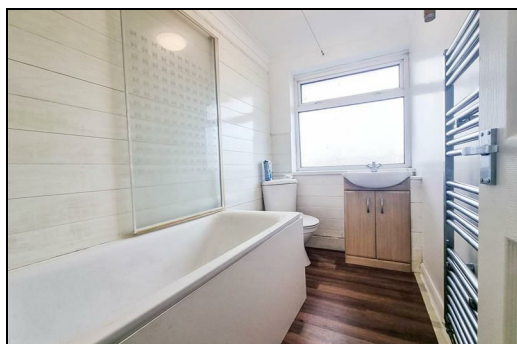
Bedroom first floor 3.49m x 3.56m


Lounge 3.06m x 3.52m

bedroom two 3.06m x 3.52m

bedroom three 3.46m x 1.91m

Bathroom 2.48m x 1.49m



Energy Efficiency Rating		
	Current	Potential
Very energy efficient - lower running costs		
(92 plus) A		
(81-91) B		
(69-80) C		
(55-68) D		
(39-54) E		
(21-38) F		
(1-20) G		
Not energy efficient - higher running costs		
England & Wales	EU Directive 2002/91/EC 	

Environmental Impact (CO ₂) Rating		
	Current	Potential
Very environmentally friendly - lower CO2 emissions		
(92 plus) A		
(81-91) B		
(69-80) C		
(55-68) D		
(39-54) E		
(21-38) F		
(1-20) G		
Not environmentally friendly - higher CO2 emissions		
England & Wales	EU Directive 2002/91/EC 