

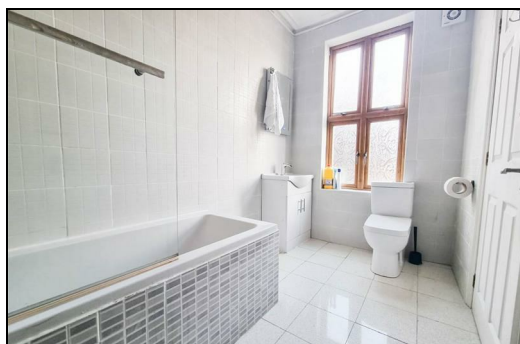



**Nelson Road, Gillingham ME7 4LU**

**£925 Per Calendar Month**

CR REAL ESTATE are delighted to offer this newly refurbished one bedroom flat. The property is modern throughout with large windows giving it a light and spacious feel throughout.

Internally there is a newly fitted kitchen, a separate bedroom with a bathroom. There is also one parking space available to the front of the property. The flat is within walking distance to Gillingham high street and Medway Hospital. Please call us now to arrange your viewing! The property is offered furnished and available now.



Energy Efficiency Rating		
	Current	Potential
<i>Very energy efficient - lower running costs</i>		
(92 plus) <b>A</b>		
(81-91) <b>B</b>		
(69-80) <b>C</b>		
(55-68) <b>D</b>		
(39-54) <b>E</b>		
(21-38) <b>F</b>		
(1-20) <b>G</b>		
<i>Not energy efficient - higher running costs</i>		
<b>England &amp; Wales</b>	EU Directive 2002/91/EC	

Environmental Impact (CO <sub>2</sub> ) Rating		
	Current	Potential
<i>Very environmentally friendly - lower CO2 emissions</i>		
(92 plus) <b>A</b>		
(81-91) <b>B</b>		
(69-80) <b>C</b>		
(55-68) <b>D</b>		
(39-54) <b>E</b>		
(21-38) <b>F</b>		
(1-20) <b>G</b>		
<i>Not environmentally friendly - higher CO2 emissions</i>		
<b>England &amp; Wales</b>	EU Directive 2002/91/EC	