



Poplar Row

Birchington | CT7 0HD



Watch our video tour - https://youtu.be/O_7-nCCJnxU

CR Real Estate are excited to present to you this wonderfully modern and attractive static Caravan; located within the Birchington Vale Holiday Park in the popular seaside village of Birchington-on-Sea.

This high end 6 berth caravan offers a sleek kitchen with built-in appliances, family bathroom, and two bedrooms with the master benefitting from a luxury fitted ensuite shower room, all finished to a superb standard. Additionally, this holiday home has gas and electric run through the mains and free Wi-Fi all year round. Spacious and bright, it's the ideal holiday home for you and your family.

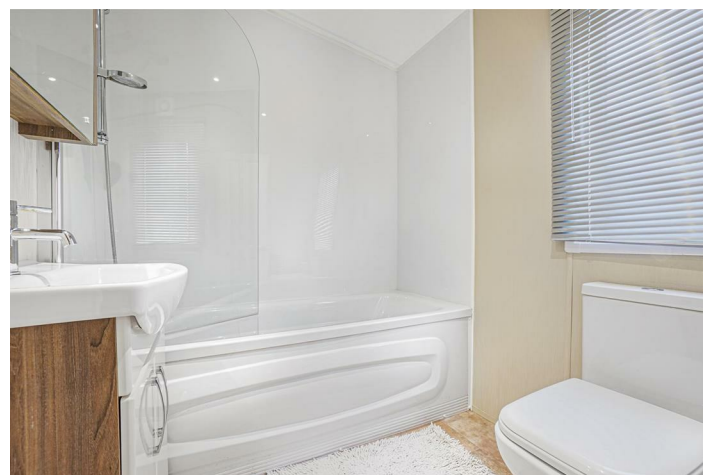
The lucky new owners of this caravan will be able to enjoy the holiday park for 11.5 months, meaning that you will be able to use your new holiday home for most of the year. On site entertainment is available, with plenty to do on the park with a recently renovated clubhouse, indoor pool with flume, a crazy golf course, arcade and an adventure playground and 9 hole, par-3 golf course.

Located in the popular tourist and retirement destination of Birchington-on-Sea; this holiday home is close by to other fantastic destinations. Write your own "Canterbury Tale" with a visit to the nearby historical town or find out why the traditional "Fish & Chips" seaside resort of Margate is now considered a trendy hotspot with a stop-off at the Turner Contemporary. Other local attractions include Howletts Wild Animal Park (with the largest group of gorillas in human care in the world), Deal Castle, The South Foreland Lighthouse or slightly further afield (16 miles from the park) the majestic White Cliffs of Dover.

Offers In Excess Of £47,500



- 2 Bedrooms
- Master En-Suite
- New Wrap Around Decking
- Dishwasher
- Washer and Dryer
- Off Road Parking
- Gas and Electric on The Mains
- Free Wifi
- Park is open for 11 1/2 Months of the Year
- BBQ Patio Area



Living Room

12'6" x 11'11" (3.83 x 3.64)

Kitchen/Diner

12'6" x 10'5" (3.83 x 3.18)

Bedroom 1

9'2" x 9'1" (2.81 x 2.78)

Bedroom 2

9'6" x 5'11" (2.91 x 1.82)

Bathroom

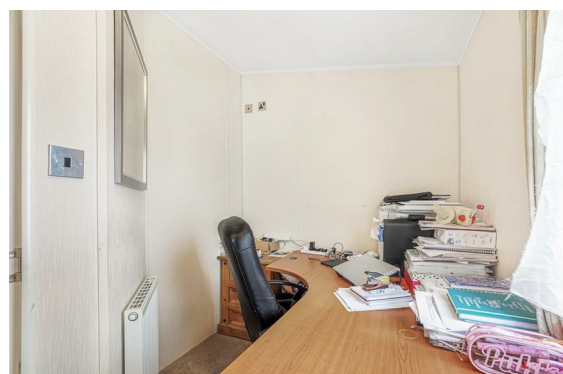
6'4" x 5'6" (1.94 x 1.69)

En-Suite

6'6" x 3'5" (2.00 x 1.05)

Sun Deck

32'7" x 11'11" (9.95 x 3.64)



GROUND FLOOR
516 sq.ft. (47.9 sq.m.) approx.



TOTAL FLOOR AREA : 516 sq.ft. (47.9 sq.m.) approx.

Whilst every attempt has been made to ensure the accuracy of the floorplan contained here, measurements of doors, windows, rooms and any other items are approximate and no responsibility is taken for any error, omission or mis-statement. This plan is for illustrative purposes only and should be used as such by any prospective purchaser. The services, systems and appliances shown have not been tested and no guarantee as to their operability or efficiency can be given.
Made with Metropix ©2022



REAL ESTATE
ESTATE AGENCY : REDEFINED

18 - 20 High Street
Gillingham
Kent
ME7 1BB

01634 570057



www.crralestate.co.uk
twitter.com/CRRRealEstateUK
facebook.com/CRRRealEstateUK

CR Real Estate endeavour to maintain accurate depictions of properties in Virtual Tours, Floor Plans and descriptions, however, these are intended only as a guide and purchasers must satisfy themselves by personal inspection.



rightmove
find your happy

