

Available with  
**Zero Deposit**



**Roseholme**

Maidstone | ME16 8DY



Roseholme  
, Maidstone, ME16 8DY

**£1,450 Per Calendar Month**

THREE BEDROOM FAMILY HOME WITH DRIVEWAY  
CLOSE TO MAIDSTONE TOWN CENTRE AVAILABLE  
NOW PLEASE CALL US TO ARRANGE YOUR VIEWING.

- THREE BEDROOMS
- FAMILY HOME
- SPACIOUS
- DRIVEWAY FOR TWO CARS
- CLOSE TO TOWN CENTRE
- GARDEN
- AVAILABLE NOW
- COUNCIL TAX BAND C
- EPC RATING D



## Entrance Hall

## Lounge

12'10 by 10'11 (3.91m by 3.33m)

## Kitchen/ Diner

17'3 by 8'5 (5.26m by 2.57m)

## Bathroom

## Bedroom 1

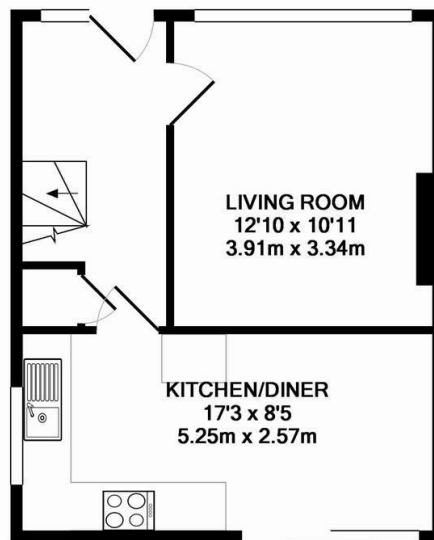
12 by 9'10 (3.66m by 3.00m)

## Bedroom 2

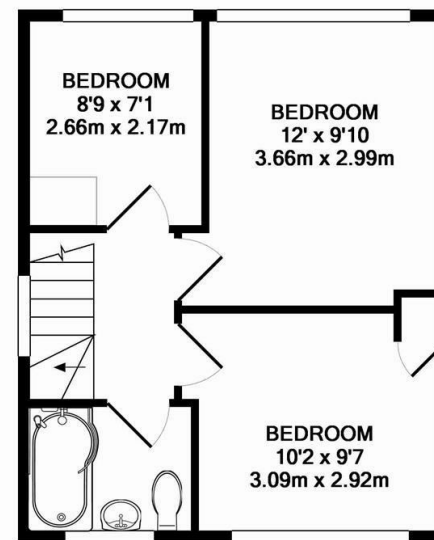
10'2 by 9'7 (3.10m by 2.92m)

## Bedroom 3

8'9 by 7'1 (2.67m by 2.16m)



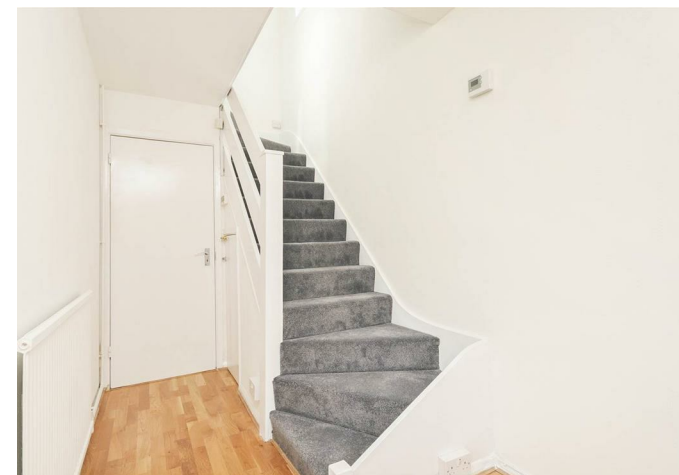
GROUND FLOOR  
APPROX. FLOOR  
AREA 362 SQ.FT.  
(33.6 SQ.M.)



1ST FLOOR  
APPROX. FLOOR  
AREA 366 SQ.FT.  
(34.0 SQ.M.)

TOTAL APPROX. FLOOR AREA 727 SQ.FT. (67.6 SQ.M.)

Whilst every attempt has been made to ensure the accuracy of the floor plan contained here, measurements of doors, windows, rooms and any other items are approximate and no responsibility is taken for any error, omission, or mis-statement. This plan is for illustrative purposes only and should be used as such by any prospective purchaser. The services, systems and appliances shown have not been tested and no guarantee as to their operability or efficiency can be given  
Made with Metropix ©2015



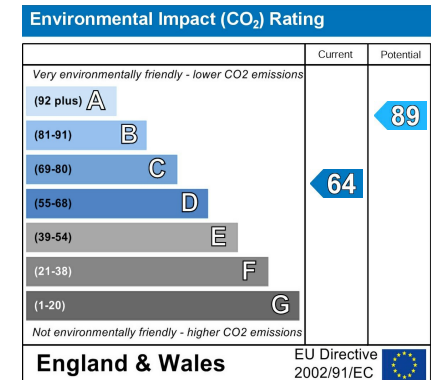
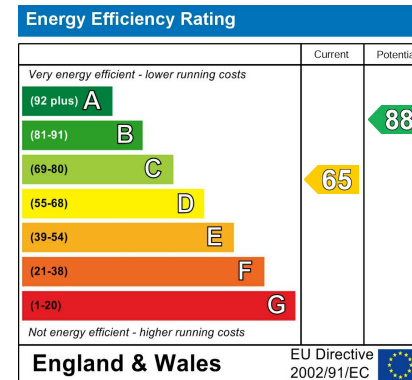


**REAL ESTATE**  
ESTATE AGENCY · REDEFINED

18 - 20 High Street  
Gillingham  
Kent  
ME7 1BB

**01634 570057**

[www.crr realestate.co.uk](http://www.crr realestate.co.uk)  
[twitter.com/CRRealEstateUK](https://twitter.com/CRRealEstateUK)  
[facebook.com/CRRealEstateUK](https://facebook.com/CRRealEstateUK)



CR Real Estate endeavour to maintain accurate depictions of properties in Virtual Tours, Floor Plans and descriptions, however, these are intended only as a guide and purchasers must satisfy themselves by personal inspection.