



REAL ESTATE

ESTATE AGENCY : REDEFINED



### Wellesley Road, Sheerness ME12 2PP

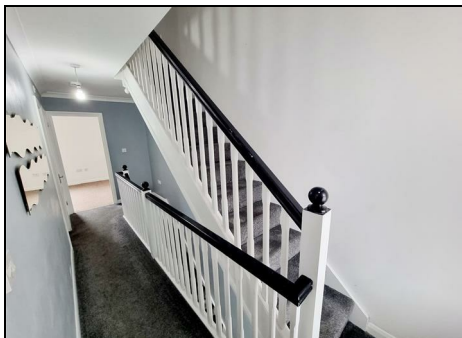
**£1,100 Per Calendar Month**

New to the market is this well-presented modern town house situated on Wellesley Road, Sheerness. The property has three bedrooms spread over three floors with generous room sizes throughout. Properties in the area are keenly sought after as the property is well positioned for local shops, schools, and the train station. Demand is expected to be high and as such an early call is advised to avoid disappointment.



Energy Efficiency Rating		
	Current	Potential
<i>Very energy efficient - lower running costs</i>		
(92 plus) <b>A</b>		
(81-91) <b>B</b>		
(69-80) <b>C</b>		
(55-68) <b>D</b>		
(39-54) <b>E</b>		
(21-38) <b>F</b>		
(1-20) <b>G</b>		
<i>Not energy efficient - higher running costs</i>		
<b>England &amp; Wales</b>	EU Directive 2002/91/EC	

Environmental Impact (CO <sub>2</sub> ) Rating		
	Current	Potential
<i>Very environmentally friendly - lower CO<sub>2</sub> emissions</i>		
(92 plus) <b>A</b>		
(81-91) <b>B</b>		
(69-80) <b>C</b>		
(55-68) <b>D</b>		
(39-54) <b>E</b>		
(21-38) <b>F</b>		
(1-20) <b>G</b>		
<i>Not environmentally friendly - higher CO<sub>2</sub> emissions</i>		
<b>England &amp; Wales</b>	EU Directive 2002/91/EC	



[www.crealestate.co.uk](http://www.crealestate.co.uk)

