



Maidstone Road, Gillingham ME8 0HZ

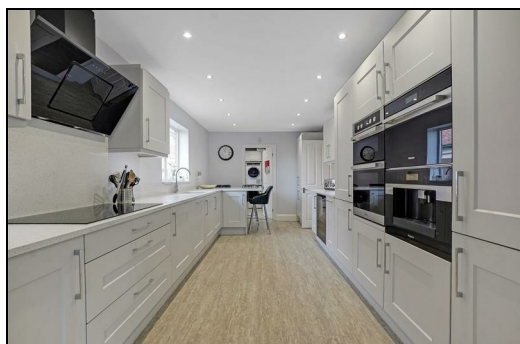
£900,000

CR Real Estate are delighted to offer for sale this stunning and smartly presented detached property in the popular Wigmore location. This extended family home has been upgraded throughout by the present owners and needs to be viewed internally to fully appreciate the size and quality this beautiful home has to offer.

The spacious and versatile ground floor living accommodation of this property benefits from; a generously sized living area with separate dining space, and a modern fitted kitchen with utility area. There are two further reception areas within this property which are currently used as a study and children's play area by the current owners. Additional benefits, also include the converted garage which makes an ideal workshop/workspace with a cloakroom/WC.

The first floor offers four double bedrooms, and family bathroom which has been recently updated to include a matching suite with separate walk in shower. The master bedroom of this property also benefits from an en-suite shower room and built in wardrobes.

Externally, this property offers a large rear garden with paved patio areas, pond space and summerhouse to remain; plus the additional benefit of ample off road parking to the front of the property for multiple vehicles.



Entrance Hall

Living Room 18'6 x 14'8 (5.64m x 4.47m)

Dining Area 27'4 x 9'8 (8.33m x 2.95m)

Kitchen 18'8 x 9'6 (5.69m x 2.90m)

Utility Area 9'10 x 6'10 (3.00m x 2.08m)

Study 11'4 x 9'6 (3.45m x 2.90m)

Play Room 10'10 x 10'9 (3.30m x 3.28m)

Workshop/Office 15'2 x 10'4 (4.62m x 3.15m)

WC

Bedroom 18'6 x 12'9 (5.64m x 3.89m)

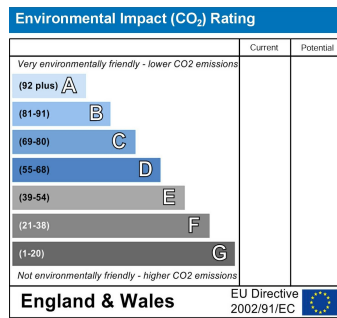
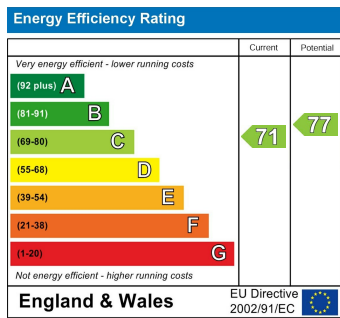
En Suite Shower Room 9'8 x 6'9 (2.95m x 2.06m)

Bedroom 14'10 x 10'10 (4.52m x 3.30m)

Bedroom 11'4 x 10'10 (3.45m x 3.30m)

Bedroom 10'3 x 8'3 (3.12m x 2.51m)

Family Bathroom 10'2 x 6'8 (3.10m x 2.03m)



www.crealestate.co.uk

