



Brooklands Road
Aylesford | ME20 6RN



Brooklands Road

Larkfield, Aylesford, ME20 6RN

Watch our video tour around Brooklands Road - https://youtu.be/7z_1y0p8ifk

If you are looking for a spacious semi-detached family home with potential to extend further (subject to the usual consents) then look no further as this one is a rare find!

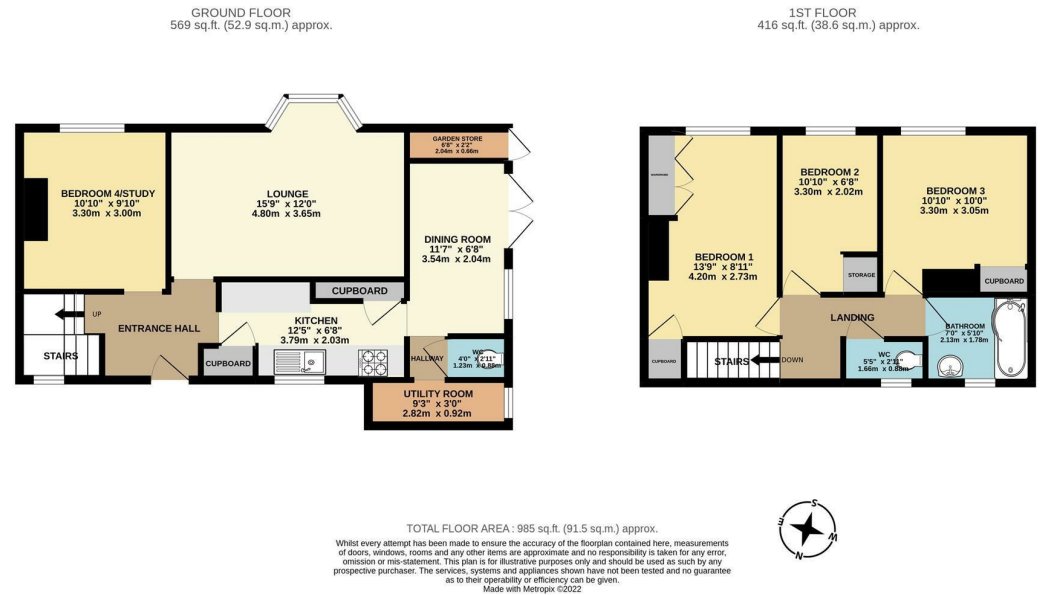
The property has been modernised in recent years with a newly fitted bathroom and décor throughout. The bay fronted sitting room overlooks the garden and is flooded with light. There is huge potential to create an incredible open plan living space if you are looking for something to add your own stamp too. The property boasts that all important ground floor

- Semi-Detached
- Utility Room
- Downstairs WC
- Cul-de-sac Location
- Four Bedrooms
- Separate Dining Area
- Extension Potential (STPP)

Offers Over £350,000







18 - 20 High Street
Gillingham
Kent
ME7 1BB
01634 570057

www.crr realestate.co.uk
twitter.com/CRRealEstateUK
facebook.com/CRRealEstateUK

Energy Efficiency Rating	
Current	Potential
Very energy efficient - lower running costs	
(92 plus) A	83
(81-91) B	
(69-80) C	
(55-68) D	
(39-54) E	
(21-38) F	
(1-20) G	
Not energy efficient - higher running costs	
England & Wales	EU Directive 2002/91/EC

Environmental Impact (CO ₂) Rating	
Current	Potential
Very environmentally friendly - lower CO ₂ emissions	
(92 plus) A	83
(81-91) B	
(69-80) C	
(55-68) D	
(39-54) E	
(21-38) F	
(1-20) G	
Not environmentally friendly - higher CO ₂ emissions	
England & Wales	EU Directive 2002/91/EC



CR Real Estate endeavour to maintain accurate depictions of properties in Virtual Tours, Floor Plans and descriptions, however, these are intended only as a guide and purchasers must satisfy themselves by personal inspection.