



Knightrider Street

Maidstone | ME15 6LD



REAL ESTATE

ESTATE AGENCY · REDEFINED

Knightrider Street , Maidstone, ME15 6LD

NO CHAIN - CR Real Estate are delighted to offer this modern two bedroom ground floor apartment in the heart of the town centre.

The property features a bright and airy lounge/dining room with open plan modern gloss kitchen with built in oven and gas hob. There is a large family bathroom and an en-suite shower room to the primary bedroom, double glazing, gas central heating, gated allocated parking for one car & communal garden.

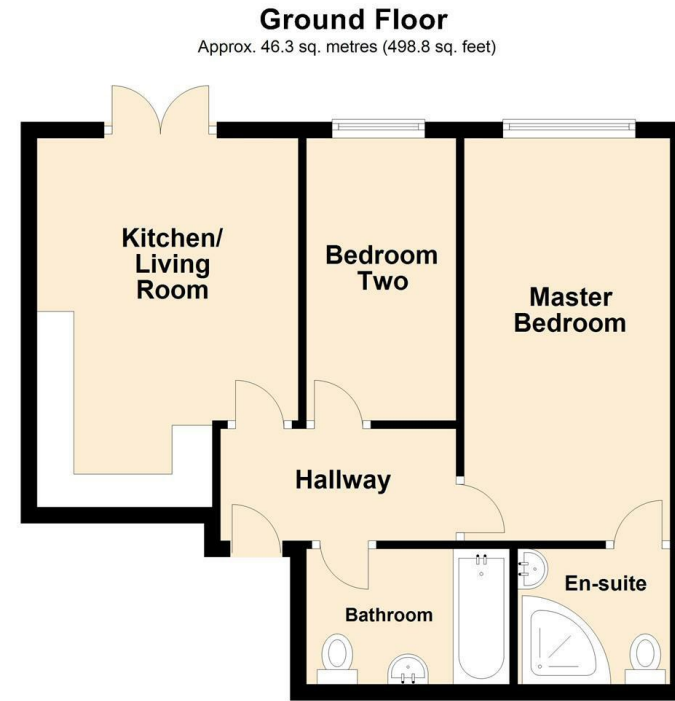
Bluecoats Yard is situated in an excellent location in the centre of Maidstone and a very short walk to Maidstone West mainline train station

- Chain Free
- Two Bedrooms
- Town Centre Location
- Open Plan Kitchen/
Living Room
- Walking Distance To
Train Station
- Parking
- Communal Gardens
- Council Tax Band D

Offers In Excess Of £200,000







Total area: approx. 46.3 sq. metres (498.8 sq. feet)



18 - 20 High Street
Gillingham
Kent
ME7 1BB
01634 570057

www.crr realestate.co.uk
twitter.com/CRRealEstateUK
facebook.com/CRRealEstateUK



Energy Efficiency Rating		Current	Potential
Very energy efficient - lower running costs			
(92 plus) A			
(81-91) B		79	79
(69-80) C			
(55-68) D			
(39-54) E			
(21-38) F			
(1-20) G			
Not energy efficient - higher running costs			
England & Wales		EU Directive 2002/91/EC	

Environmental Impact (CO ₂) Rating		Current	Potential
Very environmentally friendly - lower CO ₂ emissions			
(92 plus) A			
(81-91) B			
(69-80) C			
(55-68) D			
(39-54) E			
(21-38) F			
(1-20) G			
Not environmentally friendly - higher CO ₂ emissions			
England & Wales		EU Directive 2002/91/EC	

CR Real Estate endeavour to maintain accurate depictions of properties in Virtual Tours, Floor Plans and descriptions, however, these are intended only as a guide and purchasers must satisfy themselves by personal inspection.