



Tonbridge Road

Maidstone | ME16 8SH



Tonbridge Road , Maidstone, ME16 8SH

This Top floor studio apartment is a ready made investment opportunity or perfect first home.

Accommodation comprises open plan living space with separate kitchen and bathroom. Externally there is parking to the rear.

Excellent location for Maidstone West train station and the town centre, and ideal for anyone that regularly commutes to London and the surrounding area. A short walk to Lockmeadow Entertainment Complex with its eight-screen ODEON Cinema, a gymnasium and pool, and an 18-lane bowling alley, along with a great choice of restaurants.

- Large Studio Apartment
- Separate Kitchen
- Separate Bathroom
- Parking To Rear
- Close To Maidstone Town Centre
- 109 Year Lease

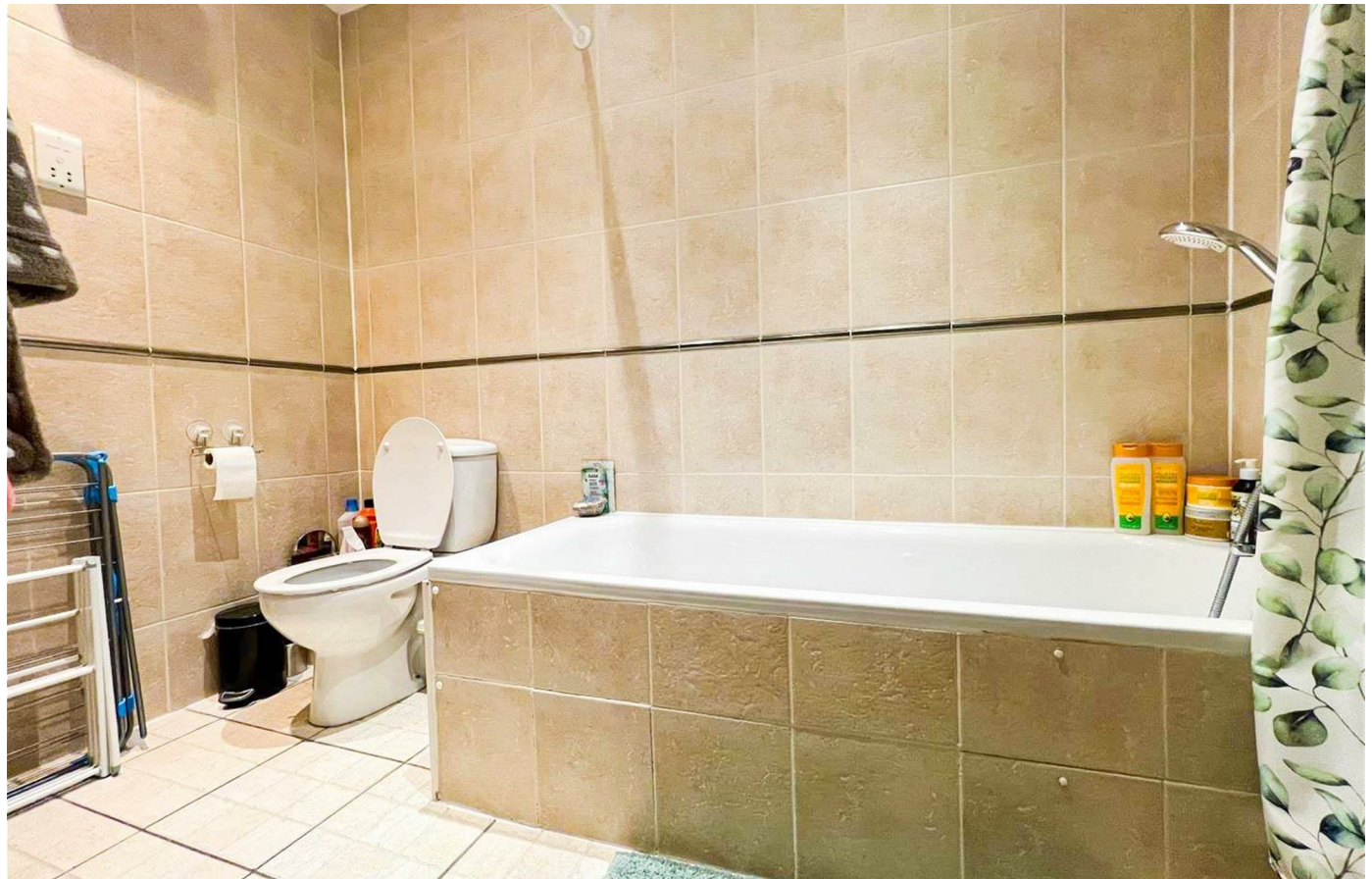
Offers Over £110,000



Living/Bed Space

Bathroom

Kitchen



Top Floor

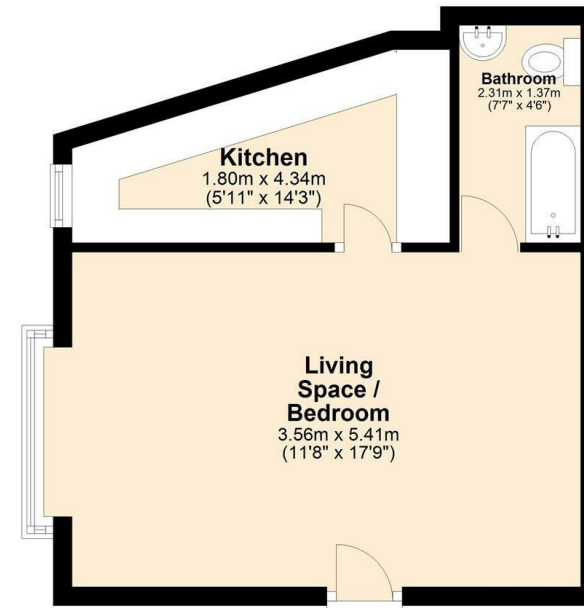
Approx. 29.9 sq. metres (321.4 sq. feet)



Total area: approx. 29.9 sq. metres (321.4 sq. feet)



Top Floor
Approx. 29.9 sq. metres (321.4 sq. feet)



Total area: approx. 29.9 sq. metres (321.4 sq. feet)



18 - 20 High Street
Gillingham
Kent
ME7 1BB

01634 570057

www.crralestate.co.uk
twitter.com/CRRealEstateUK
facebook.com/CRRealEstateUK

Energy Efficiency Rating		Current	Potential
Very energy efficient - lower running costs			
(92 plus) A			
(81-91) B			
(69-80) C			
(55-68) D			
(39-54) E			
(21-38) F			
(1-20) G			
Not energy efficient - higher running costs			
England & Wales		EU Directive 2002/91/EC	

Environmental Impact (CO ₂) Rating		Current	Potential
Very environmentally friendly - lower CO ₂ emissions			
(92 plus) A			
(81-91) B			
(69-80) C			
(55-68) D			
(39-54) E			
(21-38) F			
(1-20) G			
Not environmentally friendly - higher CO ₂ emissions			
England & Wales		EU Directive 2002/91/EC	

CR Real Estate endeavour to maintain accurate depictions of properties in Virtual Tours, Floor Plans and descriptions, however, these are intended only as a guide and purchasers must satisfy themselves by personal inspection.

