



REAL ESTATE

ESTATE AGENCY : REDEFINED



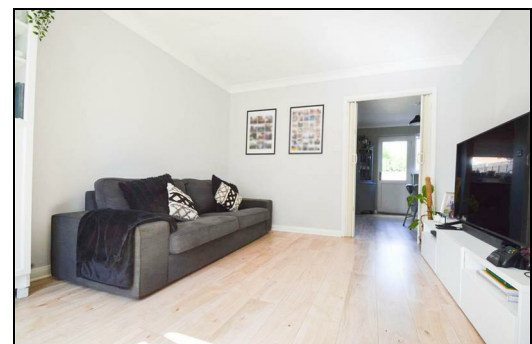
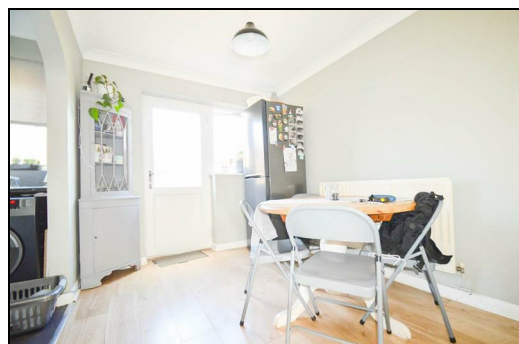
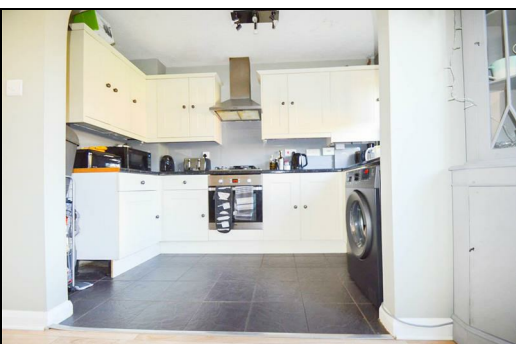
Grampian Way, Maidstone ME15 8TG

£1,300 Per Calendar Month

CR Real Estate are pleased to offer to the market this three bedroom family home to rent in Downswood. The property is located near local shops and close to the main road links and schools. Internally the property offers a spacious living area then a modern fitted kitchen/diner with patio doors leading to the easy to maintain garden. Upstairs offers three good sized bedrooms and a family bathroom. The main benefits include gas central heating, garden to rear and a garage! This property is available end of July so please call to arrange your viewing.

Council tax band C

EPC Rating D



Energy Efficiency Rating		
	Current	Potential
Very energy efficient - lower running costs		
(92 plus) A		
(81-91) B		
(69-80) C		
(55-68) D		
(39-54) E		
(21-38) F		
(1-20) G		
Not energy efficient - higher running costs		
England & Wales	EU Directive 2002/91/EC	

Environmental Impact (CO ₂) Rating		
	Current	Potential
Very environmentally friendly - lower CO2 emissions		
(92 plus) A		
(81-91) B		
(69-80) C		
(55-68) D		
(39-54) E		
(21-38) F		
(1-20) G		
Not environmentally friendly - higher CO2 emissions		
England & Wales	EU Directive 2002/91/EC	

