



Beresford Road

Gillingham | ME7 4EF

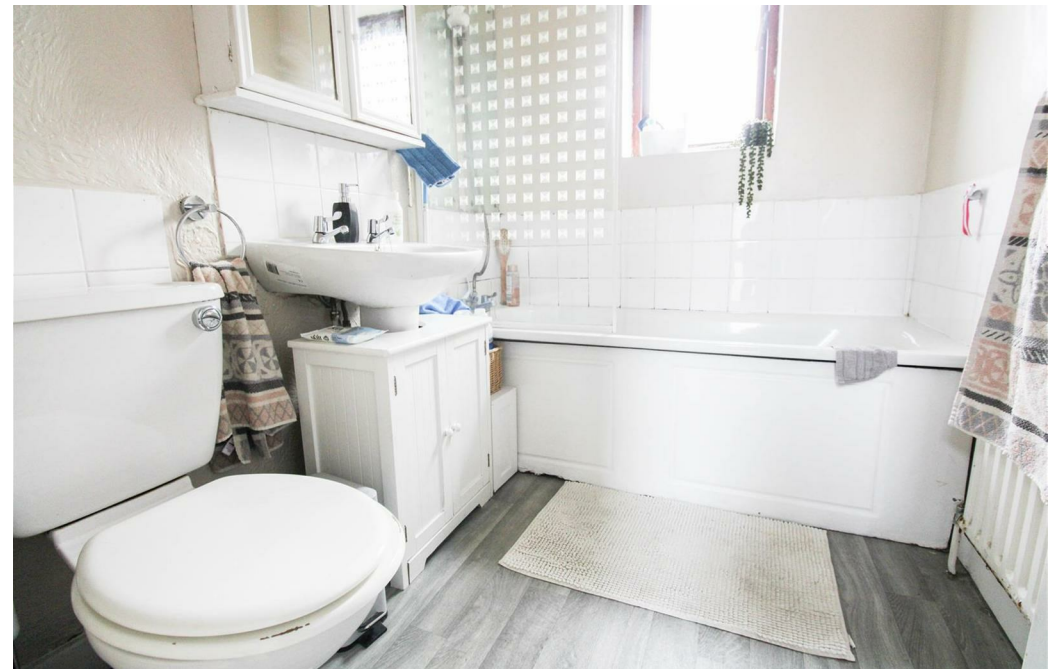


Beresford Road
, Gillingham, ME7 4EF

£145,000

CR REAL ESTATE ARE DELIGHTED TO OFFER FOR SALE THIS STUDIO BUNGALOW SITUATED CLOSE TO GILLINGHAM TOWN CENTRE. THIS PROPERTY WOULD BE IDEALLY SUITED TO A FIRST TIME BUYER OR BUY TO LET INVESTOR. BENEFITS INCLUDE A REAR GARDEN, ALLOCATED PARKING AS WELL AS GAS CENTRAL HEATING AND DOUBLE GLAZING. PLEASE CALL US NOW TO ARRANGE YOUR APPOINTMENT TO VIEW. COUNCIL TAX BAND A.

- Studio Bungalow
- Allocated Parking
- Rear Garden
- Gas Central Heating
- Double Glazing
- Close To Town Centre
- Call Now To View
- Council Tax Band A



Entrance Hall

Bathroom

7'5 x 5'7 (2.26m x 1.70m)

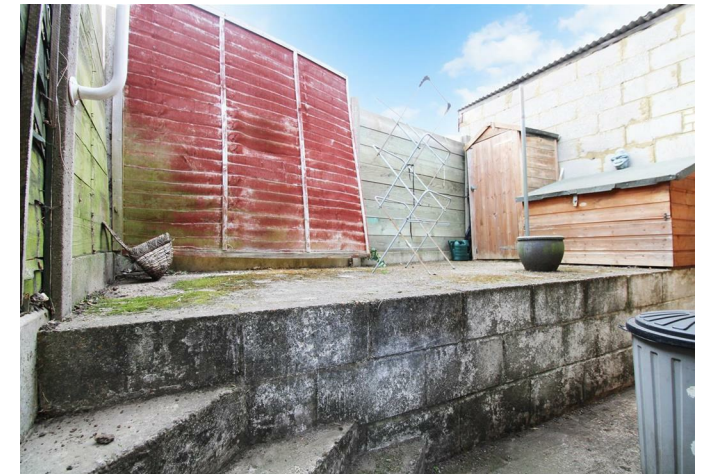
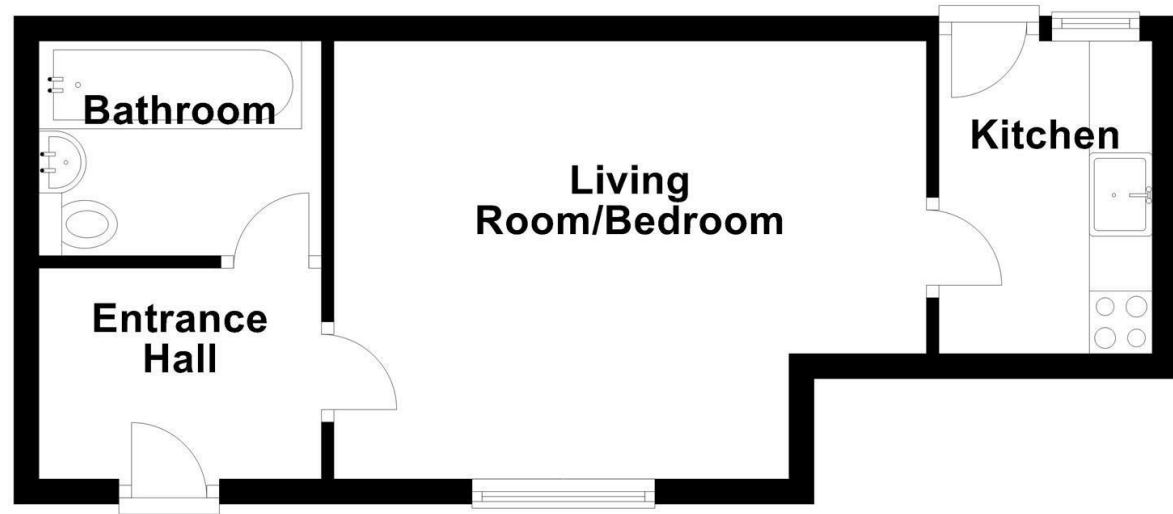
Living Room

15'6 x 11'0 (4.72m x 3.35m)

Kitchen

8'2 x 5'7 (2.49m x 1.70m)

Ground Floor





REAL ESTATE
ESTATE AGENCY · REDEFINED

18 - 20 High Street
Gillingham
Kent
ME7 1BB

01634 570057

www.crr realestate.co.uk
twitter.com/CRRealEstateUK
facebook.com/CRRealEstateUK



Energy Efficiency Rating		
	Current	Potential
<i>Very energy efficient - lower running costs</i>		
(92 plus) A		
(81-91) B		
(69-80) C		
(55-68) D		
(39-54) E		
(21-38) F		
(1-20) G		
<i>Not energy efficient - higher running costs</i>		
England & Wales	EU Directive 2002/91/EC	

Environmental Impact (CO ₂) Rating		
	Current	Potential
<i>Very environmentally friendly - lower CO2 emissions</i>		
(92 plus) A		
(81-91) B		
(69-80) C		
(55-68) D		
(39-54) E		
(21-38) F		
(1-20) G		
<i>Not environmentally friendly - higher CO2 emissions</i>		
England & Wales	EU Directive 2002/91/EC	



CR Real Estate endeavour to maintain accurate depictions of properties in Virtual Tours, Floor Plans and descriptions, however, these are intended only as a guide and purchasers must satisfy themselves by personal inspection.