



Prime View

New Romney | TN28 8NL

Prime View

Littlestone, New Romney, TN28

RN1

Guide Price £450,000 - £500,000. Primeview is an exclusive development of 13 new build properties situated in the enviable location of Littlestone. The development consists of 2, 3 and 4 bedroom properties. Each property offers spacious living accommodation throughout and have been finished with high quality fixtures and fittings.

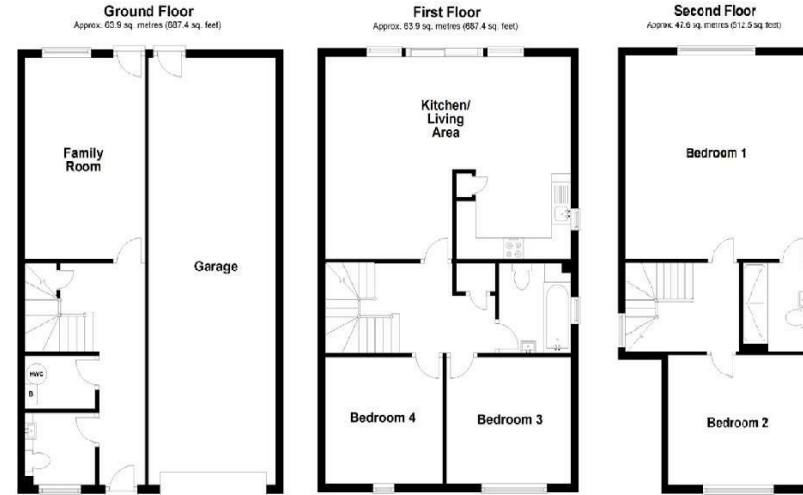
Situated in a popular residential area within walking distance of the beach and a small parade of shops, with the town of New Romney also within walking distance and offering a selection of independent shops and restaurants together with a Sainsburys store. Primary schools are located in both New Romney and Greatstone, while the Marsh Academy secondary

- Four Bedroom
- Detached Houses
- Coastal Village Location
- Incredible Views
- Integral Garage
- 10 Year Build Warranty
- Spacious Living Accommodation
- En-suite to Master

Guide Price £450,000







18 - 20 High Street
Gillingham
Kent
ME7 1BB
01634 570057

www.centurylettings.co.uk
twitter.com/centuryresident
facebook.com/CenturyLR

Energy Efficiency Rating		Current	Potential
<i>Very energy efficient - lower running costs</i>			
(92 plus) A			
(81-91) B			
(69-80) C			
(55-68) D			
(39-54) E			
(21-38) F			
(1-20) G			
<i>Not energy efficient - higher running costs</i>			
England & Wales	EU Directive 2002/91/EC		

Environmental Impact (CO ₂) Rating		Current	Potential
<i>Very environmentally friendly - lower CO₂ emissions</i>			
(92 plus) A			
(81-91) B			
(69-80) C			
(55-68) D			
(39-54) E			
(21-38) F			
(1-20) G			
<i>Not environmentally friendly - higher CO₂ emissions</i>			
England & Wales	EU Directive 2002/91/EC		

Century Residential endeavour to maintain accurate depictions of properties in Virtual Tours, Floor Plans and descriptions, however, these are intended only as a guide and purchasers must satisfy themselves by personal inspection.