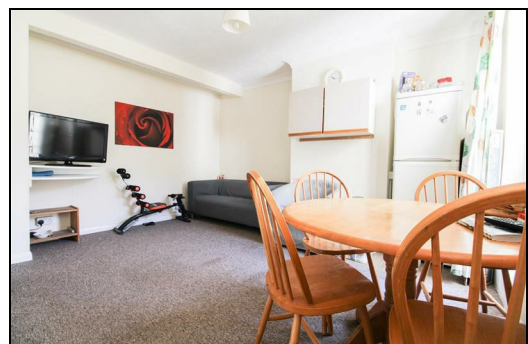
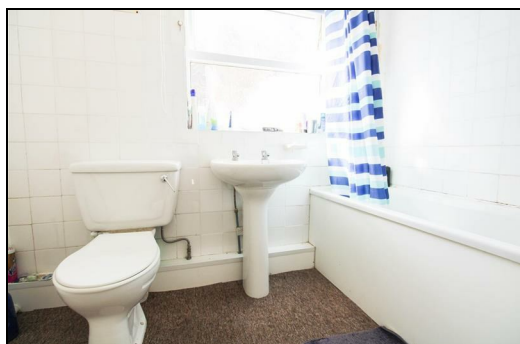
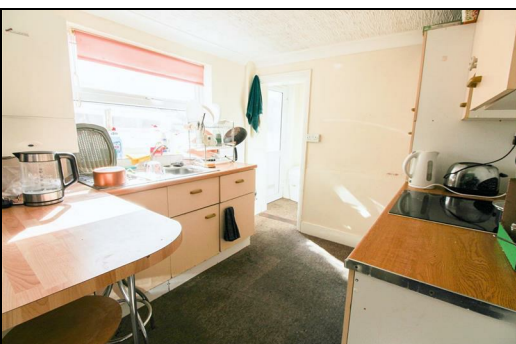




Milburn Road, Gillingham ME7 1PQ

£290,000

Century Residential are delighted to offer this Investment property with tenants in residence, situated a short walk from Gillingham town centre and train station. Benefits include a kitchen/diner, two bathrooms one on ground floor and one on first floor. There is four double bedrooms over three floors and an enclosed rear garden. The current rental income is £18,720. Please call us now to arrange your appointment to view.



Entrance Hall

Bedroom

Living Area

Kitchen

Bathroom

Bedroom

Bedroom

Bathroom

Bedroom

En Suite WC

