



Basing Close

Maidstone | ME15 7UZ



REAL ESTATE

ESTATE AGENCY · REDEFINED

Basing Close , Maidstone, ME15 7UZ

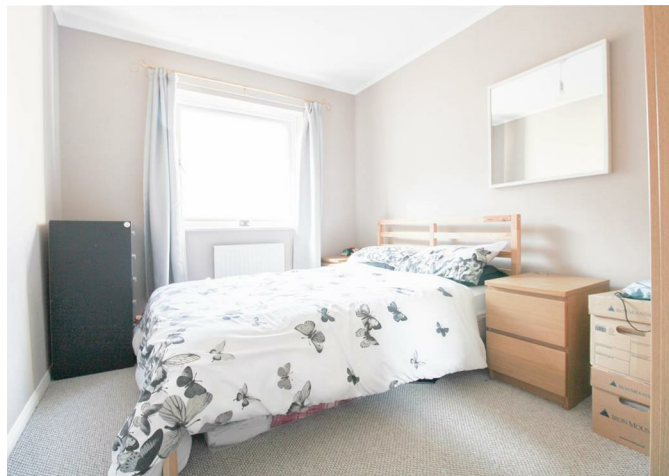
Century Residential are delighted to offer for sale with no onward chain this one bedroom apartment situated close to Maidstone town centre. This first floor property offers a spacious living room, fitted kitchen, double bedroom and bathroom.

The property offers communal parking as well as beautifully maintained gardens. Please call us now to arrange your appointment to view.

Council Tax Band B

- First Floor Flat
- No Onward Chain
- Parking
- Ideal Investment Property
- Close To Maidstone Town Centre
- Communal Grounds

Offers Over £130,000



Entrance Hall

Living Room

14'3 x 10'5 (4.34m x 3.18m)

Kitchen

13'10 x 5'9 (4.22m x 1.75m)

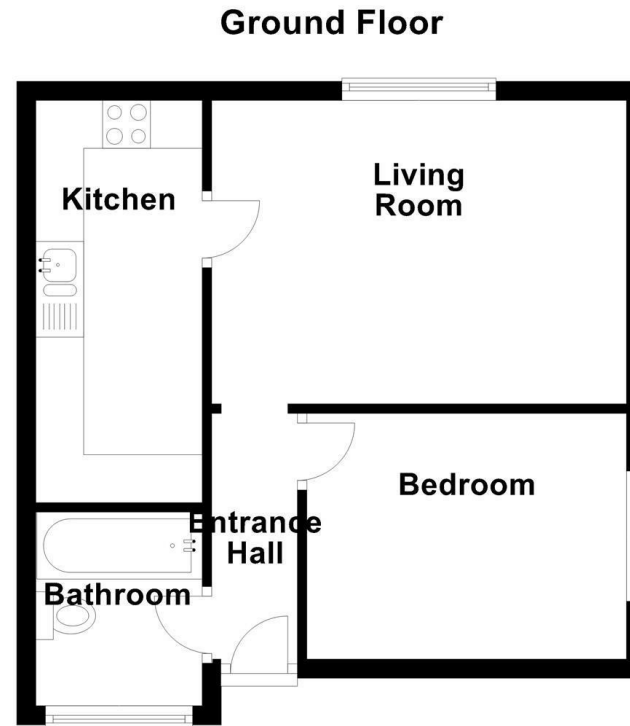
Bedroom

11'0 x 8'5 (3.35m x 2.57m)

Bathroom

6'8 x 5'9 (2.03m x 1.75m)





18 - 20 High Street
 Gillingham
 Kent
 ME7 1BB
01634 570057

www.crr realestate.co.uk
twitter.com/CRRealEstateUK
facebook.com/CRRealEstateUK

Energy Efficiency Rating		Current	Potential
Very energy efficient - lower running costs			
(92 plus) A			
(81-91) B		83	84
(69-80) C			
(55-68) D			
(39-54) E			
(21-38) F			
(1-20) G			
Not energy efficient - higher running costs			
England & Wales		EU Directive 2002/91/EC	

Environmental Impact (CO ₂) Rating		Current	Potential
Very environmentally friendly - lower CO ₂ emissions			
(92 plus) A			
(81-91) B		82	83
(69-80) C			
(55-68) D			
(39-54) E			
(21-38) F			
(1-20) G			
Not environmentally friendly - higher CO ₂ emissions			
England & Wales		EU Directive 2002/91/EC	

CR Real Estate endeavour to maintain accurate depictions of properties in Virtual Tours, Floor Plans and descriptions, however, these are intended only as a guide and purchasers must satisfy themselves by personal inspection.

